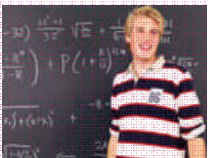




Truckee Meadows Community College ~ University of Nevada, Reno ~ Washoe County School District



# *Washoe K-16 Data Profile*

WCSD Graduates Attending UNR and TMCC

Includes WCSD 2009 Graduates

Prepared By:

The Education Alliance of Washoe County  
*Joint Data Profile Committee*

December 2009

*This page intentionally left blank.*

# WASHOE K-16 DATA PROFILE 2009

## Annual Report Contents

Summary

Trends in 2008-2009 Data

Pages 1 - 3

High School Measures

Graduation Rates

4 - 7

Non-Graduates

8

College Entrance Exams

9 - 22

Enrollment in Higher Level Courses

23 - 33

Millennium Scholarships

34

College Measures

College Going Rates

35 - 37

Capture Rates

38 - 44

Remediation

45 - 49

Persistence Rates

50 - 53

UNR College Entrance Exams

54 - 57

College Success

Overall College Graduation Rates

58 - 67

UNR Graduates Survey Data

# DATA PROFILE COMMITTEE

## Washoe County School District

Paul LaMarca  
Chief Accountability Officer

Steve Hull  
Chief Communications/Public Affairs Officer

Jan Hall  
Data Analyst, Public Policy, Accountability & Assessment

Lori Lotts  
Data Assistant, Public Policy, Accountability & Assessment

Megan Armstrong  
Graduate Research Assistant, Public Policy, Accountability & Assessment

## University of Nevada, Reno

Bill Cathey  
Vice Provost, Instruction and Undergraduate Programs

Melisa Choroszy  
Associate Vice President for Records/Enrollment

Serge Herzog  
Director of Institutional Analysis

John Mahaffy  
Director of Assessment

Arthur Chenin  
Institutional Research Analyst

## Truckee Meadows Community College

Elena Bubnova  
Director of Institutional Research

Jason Oetjen  
Research Analyst

## Nevada System of Higher Education

Linda Heiss  
Director of Institutional Research

## The Education Alliance of Washoe County

Denise Hedrick  
Executive Director

Anne Loring  
P-16 Advocacy Council

Ginny Jackson  
Past President and Member of the Board of Directors


# DATA PROFILE PARTICIPANTS

## WCSD High Schools\*



Academy of Arts, Careers & Technology**
Damonte Ranch
Galena
Gerlach
Hug
Incline
McQueen
North Valleys
Reed
Reno
Spanish Springs
Sparks
TMCC HS
Washoe
Wooster

## Nevada System of Higher Education



University of Nevada, Reno
Truckee Meadows Community College

\* Data are limited for high schools that opened after the initial year of this project: North Valleys (2001-02), Spanish Springs (2001-02), Damonte Ranch (2003-4) and Academy of Arts, Careers & Technology (2005-06).

\*\* In 2008-2009, Regional Technical Institute became the Academy of Arts, Careers & Technology.

# INTRODUCTION

## ***1998 - First Edition***

- ∞ Tracked and analyzed data from the 1997 WCSD graduating cohort
- ∞ Established baseline data
- ∞ Compared district trends with state and national trends
- ∞ Reported the first college-going rate ever calculated for WCSD, which showed that the WCSD college-going rate was comparable to the national rate, and much higher than the average rate for Nevada overall

## ***2002***

- ∞ Reported eye-opening statistics on the English and math remediation needs of WCSD graduates attending UNR and TMCC

## ***2006***

- ∞ Added analyses of college admissions and college success of WCSD graduates from 1997 to 2005

## ***2007 - Tenth Edition***

- ∞ Reviewed and compared six high school graduation rate formulas
- ∞ Reported the results of a comprehensive cohort analysis of high school graduation rates for the WCSD 2002-2003 freshman cohort

## ***2009***

- ∞ Includes alumni and employer survey data results depicting the post-college success of WCSD graduates who earned degrees from the University of Nevada, Reno

For the past twelve years, the Washoe County School District, Truckee Meadows Community College and the University of Nevada, Reno have worked in concert through the Education Alliance of Washoe County to produce the Washoe K-16 Data Profile, formerly called the High School Data Profile. The Nevada Department of Education and the Nevada System of Higher Education have also participated in this effort. The Data Profile is the collection and presentation of data about Washoe County School District high school students and their matriculation into college, with special emphasis on the graduates who attend the University of Nevada, Reno and Truckee Meadows Community College. Through this effort, we hope to identify factors that can increase the success of our students as they proceed from high school to post-secondary education.

The Data Profile has expanded in scope each year. The 2002 edition reported a two-year increasing trend in the percentage of Washoe County School District graduates enrolled in remedial English and/or mathematics courses at both UNR and TMCC. Concern about this trend and its potential impact on students led to an increased focus on the remediation issue for the 2003 through 2005 editions of the Data Profile. The 2006 edition included college success data for the first and second cohorts tracked by the Data Profile, the WCSD 1997 and 1998 graduating classes. The tenth anniversary edition added a comparison of methods used to calculate high school graduation rates and reported the rates produced by each method for the WCSD Class of 2006. The 2009 edition continues the Cohort Graduation Rate reporting that was introduced in the 2007 edition, focuses more intently on remediation needs identified by placement exams (rather than remedial enrollment, which under-reports the true remediation need), and includes more detail on differences in AP/IB enrollment, and SAT/ACT participation across student groups.

The Education Alliance of Washoe County hopes that this and future issues of the Data Profile will continue to help educators, parents, students, and our community better prepare our graduates for a successful transition into higher education and for continued success throughout their college careers.

# SUMMARY OF DATA TRENDS

## WCSD Graduates Including the Class of 2009

### High School Trends

WCSD has calculated a cohort high school graduation rate for the Classes of 2006, 2007, 2008 and 2009 – 57%, 55%, 56% and 56%, respectively. This is a longitudinal, student-level graduation rate, which uses a different calculation method than that used for the Nevada Department of Education annual graduation reports. Asian and White students have consistently graduated at much higher rates than American Indian, Hispanic and Black students.

Overall ACT participation has gradually dropped from a high of 52% in 1994, to 36% in 2009. However, ACT participation by Hispanic students has increased from 16% in 2006, to 29% in 2009. SAT participation ranged between 30% and 40% for most of the past sixteen years, with a slight peak at 46% in 2007, but a decline back to 41% in 2009. Since 1998, average ACT and SAT scores for WCSD graduates have remained above state and national averages, with SAT verbal and math scores reaching their peaks in 2003, ACT English reaching its peak in 2007, and ACT math, in 2000.

Under the recently instituted Gateway Curriculum, the percentage of seniors enrolling in four credits in math and three credits in science has increased; 59% of 2009 seniors enrolled in four years of math, and 87% enrolled in three years of science. The Gateway Curriculum becomes mandatory for the Class of 2010. In 2009, 76% of seniors earned credit in Algebra 3-4 or higher math courses.

Thirty-one percent of 2009 juniors and seniors enrolled in AP and/or IB courses. This represents a doubling of AP/IB enrollment since 1998, when only 15 percent of juniors and seniors took AP courses. Hispanic enrollment in AP/IB courses increased to 20% in 2009, compared to 15% in 2008. In 2006, 2007 and 2009, all WCSD comprehensive high schools attained an AP Challenge Index above 1.0.

### College Trends

The percentage of WCSD 2009 graduates enrolling in UNR (27%) furthers an incremental decreasing trend from a high of 32% in 2005. Between 2002 and 2008, TMCC enrollment was consistent at about 25%; 2009 enrollment was 26%.

For WCSD 2009 graduates attending UNR, the need for remediation (based on placement exams) has decreased from 49% in 2005, to 42% in 2009. Between 2005 and 2008, there was a slight increase in remedial need for WCSD graduates attending TMCC (from 87% to 90%). The 2009 rate of 95% resulted from an increase in the Accuplacer cut score used to determine placement in college-level math.

First- and second-semester persistence rates at both TMCC and UNR have remained relatively steady over the past eight years, but the second-semester persistence rates for the WCSD Class of 2008 increased at both institutions, to 86% at UNR (from an average of 80% over the previous seven years), and to 76% at TMCC (from an average of 71% over the previous seven years).

# SUMMARY OF DATA TRENDS (cont.)

## WCSD Graduates Including the Class of 2009

### **College Success Trends: WCSD Graduates**

Over half of the students who graduated from UNR between 2000 and 2007 were WCSD graduates.

Ninety-two percent of WCSD/UNR graduates report being employed or enrolled in graduate studies one year after their UNR commencement.

### **Recommendations for Future Work**

Continue reporting the cohort graduation rate and the associated credit-deficient and drop-out rates.

Investigate factors that contribute to a student's failure to graduate from high school.

Continue to examine Washoe County data at the four key transition points from high school to completion of a college degree: high school graduation rate, college-going rate, persistence rate after two college semesters, college graduation rate.

Continue to disaggregate selective data sets by student ethnicity.

Continue to improve the capability to identify factors that promote or retard student success in higher education.



# COHORT GRADUATION RATE VS. STATE GRADUATION RATE

## Graduation Rate Calculations: *Cohort Rate* Versus *Leaver Rate*

As described in detail in the 2007 edition of the *Washoe K-16 Data Profile*, researchers have used many different methods to measure high school graduation rates. Some methods attempt to estimate the percentage of a freshman class that graduates four years later. Others measure some other aspect of graduation. The various formulas yield disparate results and often describe very different relationships.

Currently, the method known as the *Leaver Rate* is used to produce the official graduation rate reported by the Nevada Department of Education. The *Leaver Rate* measures the percentage of students in a given senior class who leave school as graduates – that is, leave school with a standard, advanced, or honors diploma. The *Leaver Rate* answers the question, “Of those students who officially leave, how many leave by graduating?” The majority of states, including Nevada, have used the *Leaver Rate* to produce the graduation rate used for Federal accountability reporting required by the No Child Left Behind act. Graduation rates produced by the *Leaver Rate* method are typically higher than graduation rates calculated by other methods.

The Class of 2008 graduation rate, as calculated using the *Leaver Rate* formula, was **77.3%** for WCSD and **68.7%** for the state of Nevada.

In 2005, the National Governors Association (NGA) developed a formula for calculating a longitudinal cohort high school graduation rate that determines the percentage of first-time freshmen and transfer-in students who ultimately graduate with a regular diploma within four years. The Education Alliance of Washoe County (formerly the Education Collaborative of Washoe County) initiated WCSD’s first attempt to track individual students and produce a cohort graduation rate for the Class of 2006. A detailed report of this endeavor and the results were published in the 2007 edition of the *Washoe K-16 Data Profile*. (In that report, the method was referred to as the *EC/NGA Cohort High School Graduation Rate*. In this report, the name has been shortened to the *Cohort Graduation Rate*.)

The *Cohort Graduation Rate* consists of the longitudinal tracking of individual students in a given freshman class, including transfers in and out of the cohort, over their four years in high school. Expressed as a formula, the *Cohort Graduation Rate* equals:

$$\frac{\text{Number of 4-Year Graduates}}{(\text{1}^{\text{st}}\text{-Time Freshmen}) + (\text{Total Transfers In}) - (\text{Total Transfers Out})}$$

The *Number of 4-Year Graduates* includes students who earned standard, advanced, honors and adult diplomas by August of their fourth year.

*1<sup>st</sup>-Time Freshmen* includes 9<sup>th</sup> graders who transferred in during their freshman year.

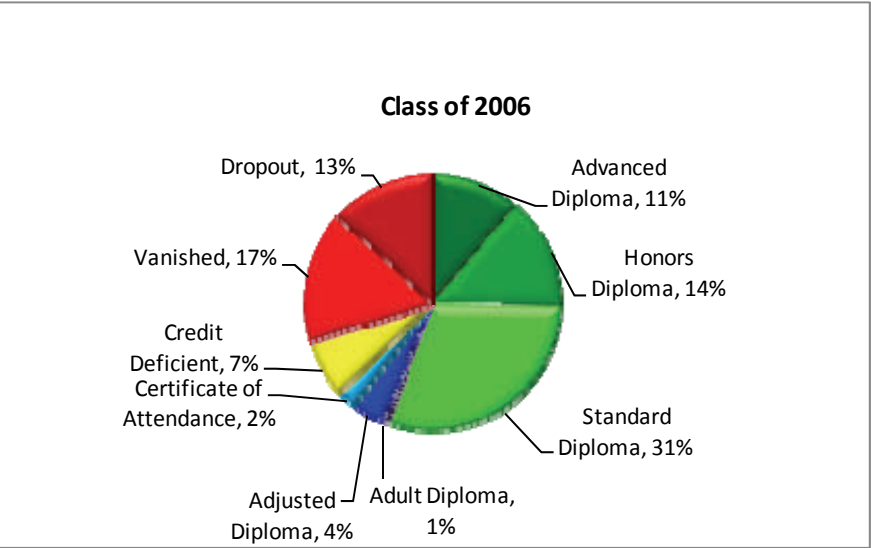
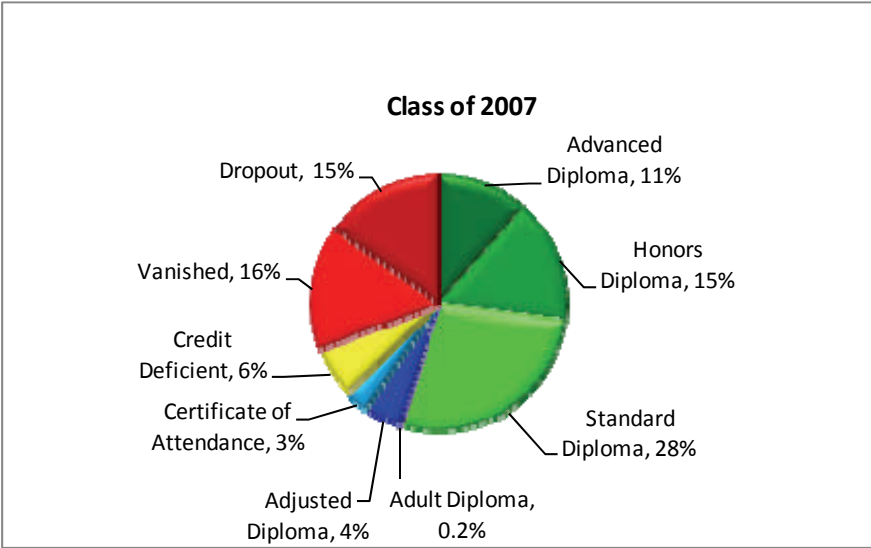
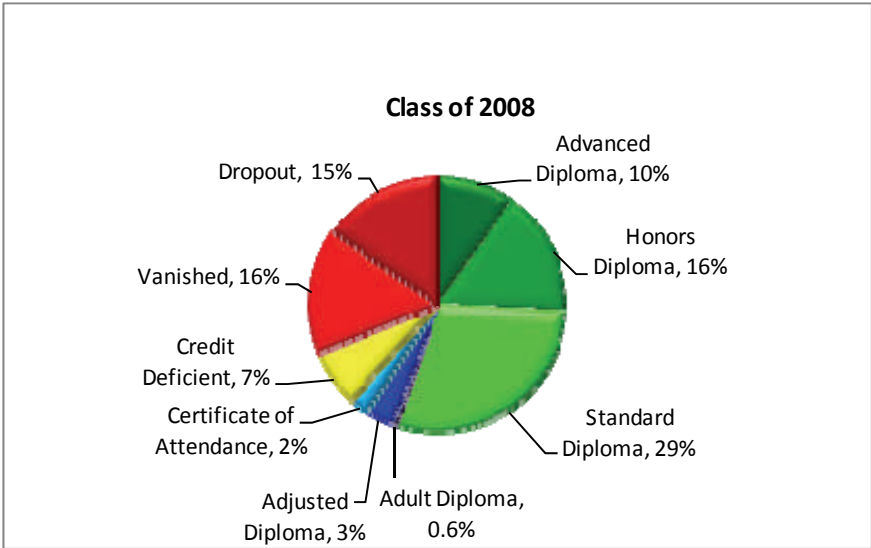
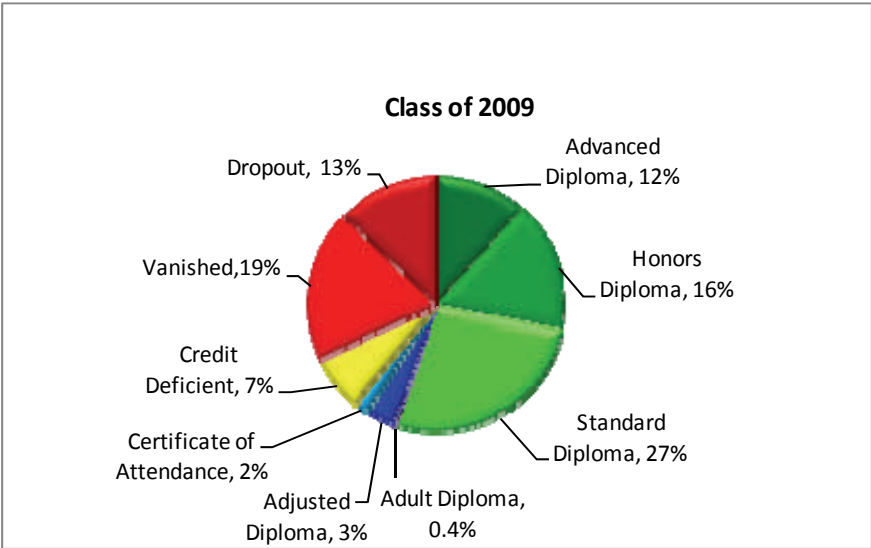
*Total Transfers In* includes all transfers in that occurred between the cohort’s sophomore and senior years.

*Total Transfers Out* includes all transfers out that occurred between the cohort’s freshman and senior years.

All high school graduation rates reported in the following pages were calculated using the *Cohort Graduation Rate* method.

# COHORT GRADUATION RATE

Cohort Graduation Rates	2006	2007	2008	2009
	57%	55%	56%	56%



The 2006-2009 rates have been recalculated to conform to the NDE’s Adjusted Cohort Graduation Rate Method. Consequently, numbers reported here differ from previously reported numbers. The Standard Diploma requires completion of 22.5 credits (16 required and 6.5 elective) and passing scores on the Nevada Proficiency Exams. The Honors Diploma requires completion of 24 credits (20 required and 4 elective), a weighted GPA of 3.4 or higher, eight or more credits in advanced courses (honors, AP or IB) and passing scores on the Nevada Proficiency Exams. The Advanced Diploma requires a completion of 24 credits, one additional math and one additional science credit beyond that required for the Standard Diploma, a weighted or unweighted GPA of 3.25 or higher and passing scores on the Nevada Proficiency Exam.

Some students with Individualized Education Plans (IEPs) earn Adjusted Diplomas. Requirements for Adjusted Diplomas are individualized to students’ disabilities. Students who earn Adjusted Diplomas are not counted as graduates by the state of Nevada.

# COHORT GRADUATION RATE BY HIGH SCHOOL

School	Class of 2006		Class of 2007		Class of 2008		Class of 2009	
	N	%	N	%	N	%	N	%
AACT	26	70%	32	84%	32	76%	47	90%
Damonte Ranch	106	55%	138	51%	192	60%	191	60%
Galena	286	73%	295	77%	274	74%	298	70%
Gerlach	-	-	-	-	-	-	-	-
Hug	105	36%	103	34%	130	38%	133	41%
Incline	71	60%	91	66%	65	65%	74	60%
McQueen	347	70%	342	72%	352	71%	375	71%
North Valleys	243	49%	262	48%	267	50%	298	55%
Reed	361	66%	401	62%	414	64%	379	62%
Reno	358	76%	383	76%	343	73%	338	74%
Spanish Springs	300	65%	326	62%	345	63%	349	66%
Sparks	130	43%	122	45%	129	48%	135	45%
TMCC	90	81%	80	85%	82	86%	92	92%
Washoe	84	18%	43	9%	84	16%	58	10%
Wooster	159	50%	159	45%	170	43%	184	46%
<b>WCSD</b>	<b>2673</b>	<b>57%</b>	<b>2778</b>	<b>55%</b>	<b>2885</b>	<b>56%</b>	<b>2957</b>	<b>56%</b>

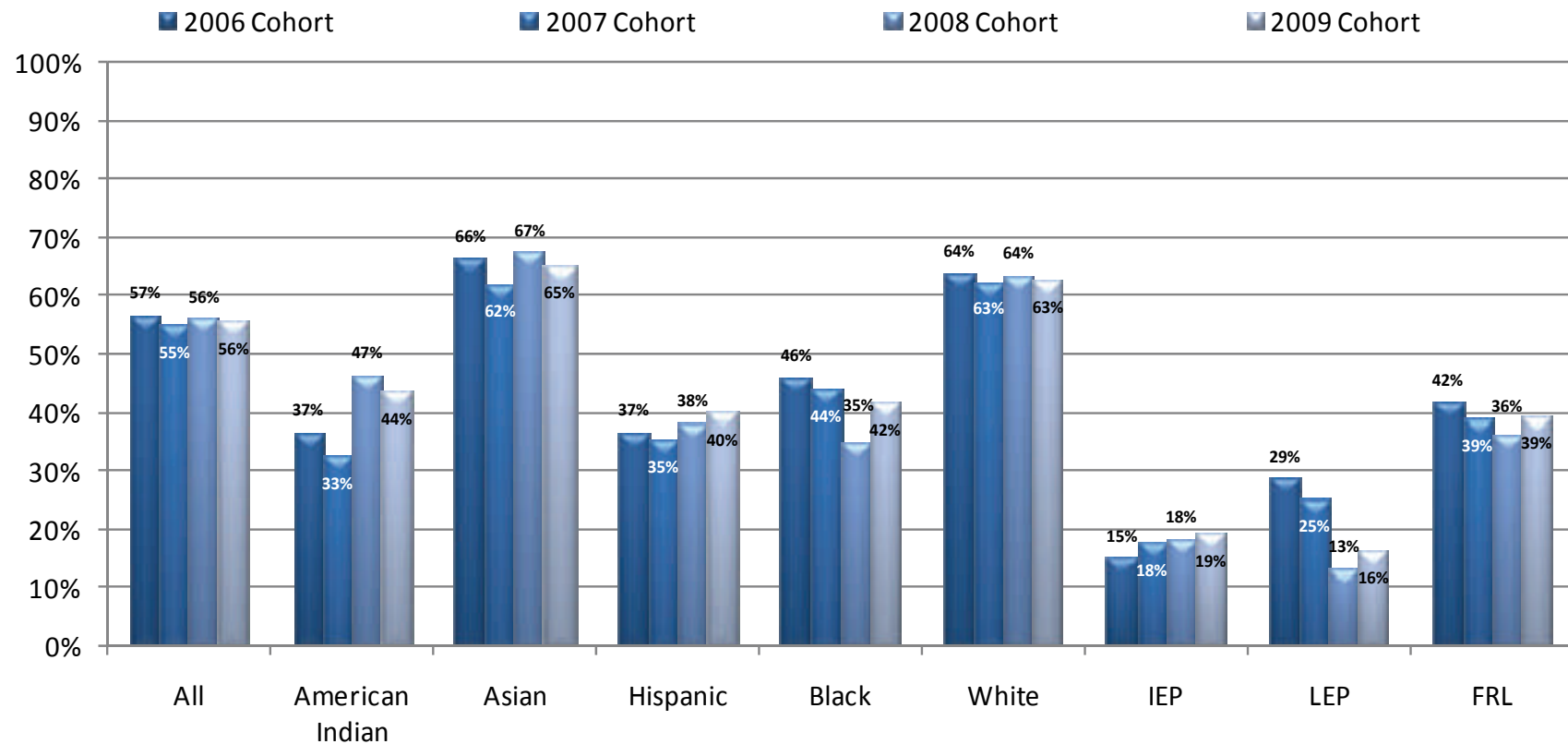
The 2006 through 2008 rates have been recalculated to conform to the NDE's Adjusted Cohort Graduation Rate Method. Consequently, numbers reported here differ from previously reported numbers .

\* District Totals include schools with fewer than 10 students in a population, and are therefore higher than the total of the column percentages.

‘-’ Denotes too few students to report.

N = number of graduates

# COHORT GRADUATION RATE BY STUDENT GROUP



Class of	All	American Indian	Asian	Hispanic	Black	White	IEP	LEP	FRL
2006	2673	41	204	384	82	1962	87	87	316
2007	2778	39	210	402	77	2050	110	87	460
2008	2885	47	237	491	78	2033	107	38	552
2009	2957	51	229	563	92	2022	131	71	794

The 2006 through 2008 rates have been recalculated to conform to the NDE's Adjusted Cohort Graduation Rate Method. Consequently, numbers reported here differ from previously reported numbers.

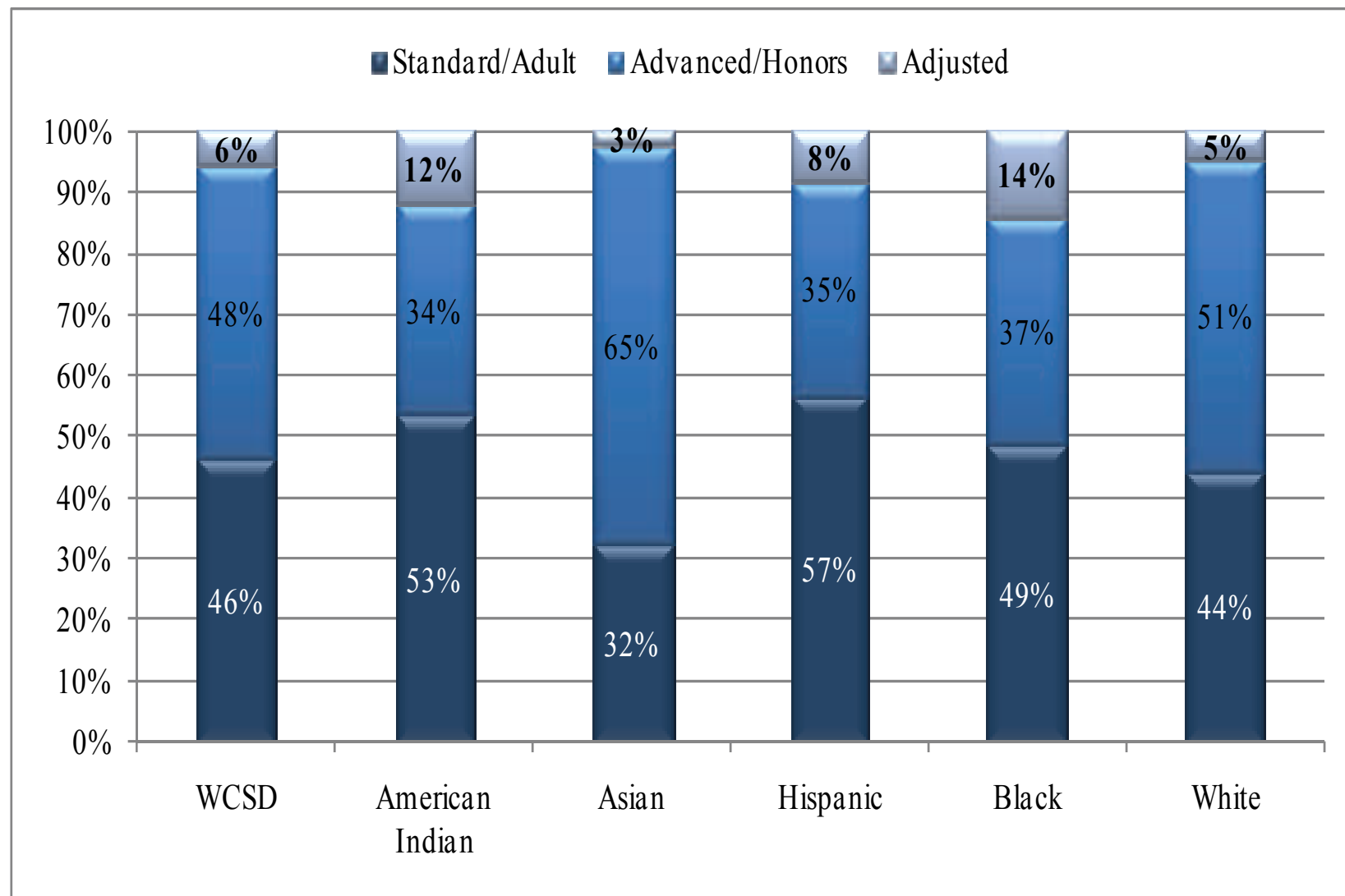
LEP = Students with limited English proficiency

IEP = Students with an Individualized Education Plan

FRL = Students receiving free or reduced priced lunches

# TYPE OF DIPLOMA BY ETHNICITY

2009 Graduates



# NON-GRADUATES

Dropout, Vanished, Credit Deficient

SCHOOL	Class of 2006*				Class of 2007*				Class of 2008*				Class of 2009			
	ed		Deficient		ed		Deficient		ed		Deficient		ed		Deficient	
	N	%	N	%	N	%	N	%	N	%	N	%	N	%	N	%
AACT	-	-	-	-	-	-	-	-	-	-	-	-	-	-	-	-
Damonte Ranch	65	33%	10	5%	101	38%	14	5%	88	28%	13	4%	78	25%	29	9%
Galena	78	20%	19	5%	59	15%	17	4%	61	17%	18	5%	111	26%	-	-
Gerlach	-	-	-	-	-	-	-	-	-	-	-	-	-	-	-	-
Hug	98	37%	44	15%	122	40%	25	9%	126	38%	32	9%	125	39%	32	10%
Incline	33	23%	-	-	31	22%	-	-	23	23%	-	-	41	33%	-	-
McQueen	91	19%	35	7%	80	17%	27	6%	98	19%	34	7%	93	18%	38	7%
North Valleys	194	39%	32	6%	200	37%	40	7%	208	38%	34	6%	164	31%	47	9%
Reed	116	21%	37	7%	145	22%	35	5%	147	23%	40	6%	174	28%	22	4%
Reno	88	18%	12	3%	80	16%	20	4%	98	21%	-	-	97	21%	-	-
Spanish Springs	107	23%	27	6%	125	24%	36	7%	147	26%	35	6%	116	22%	38	7%
Sparks	101	33%	31	10%	93	34%	24	9%	88	33%	22	8%	96	33%	35	12%
TMCC	11	10%	-	-	-	-	-	-	11	11%	-	-	-	-	-	-
Washoe	297	63%	63	13%	382	77%	45	9%	365	70%	55	11%	471	77%	56	9%
Wooster	120	38%	14	4%	126	36%	35	10%	143	37%	61	16%	132	33%	59	15%
<b>WCSD</b>	<b>1402</b>	<b>30%</b>	<b>324</b>	<b>7%</b>	<b>1557</b>	<b>31%</b>	<b>328</b>	<b>6%</b>	<b>1611</b>	<b>31%</b>	<b>360</b>	<b>7%</b>	<b>1704</b>	<b>32%</b>	<b>356</b>	<b>7%</b>

In accordance with the Nevada Department of Education, cohort members who transferred to the Washoe Adult HS program before the age of 18 are included in the 'Dropout' category.

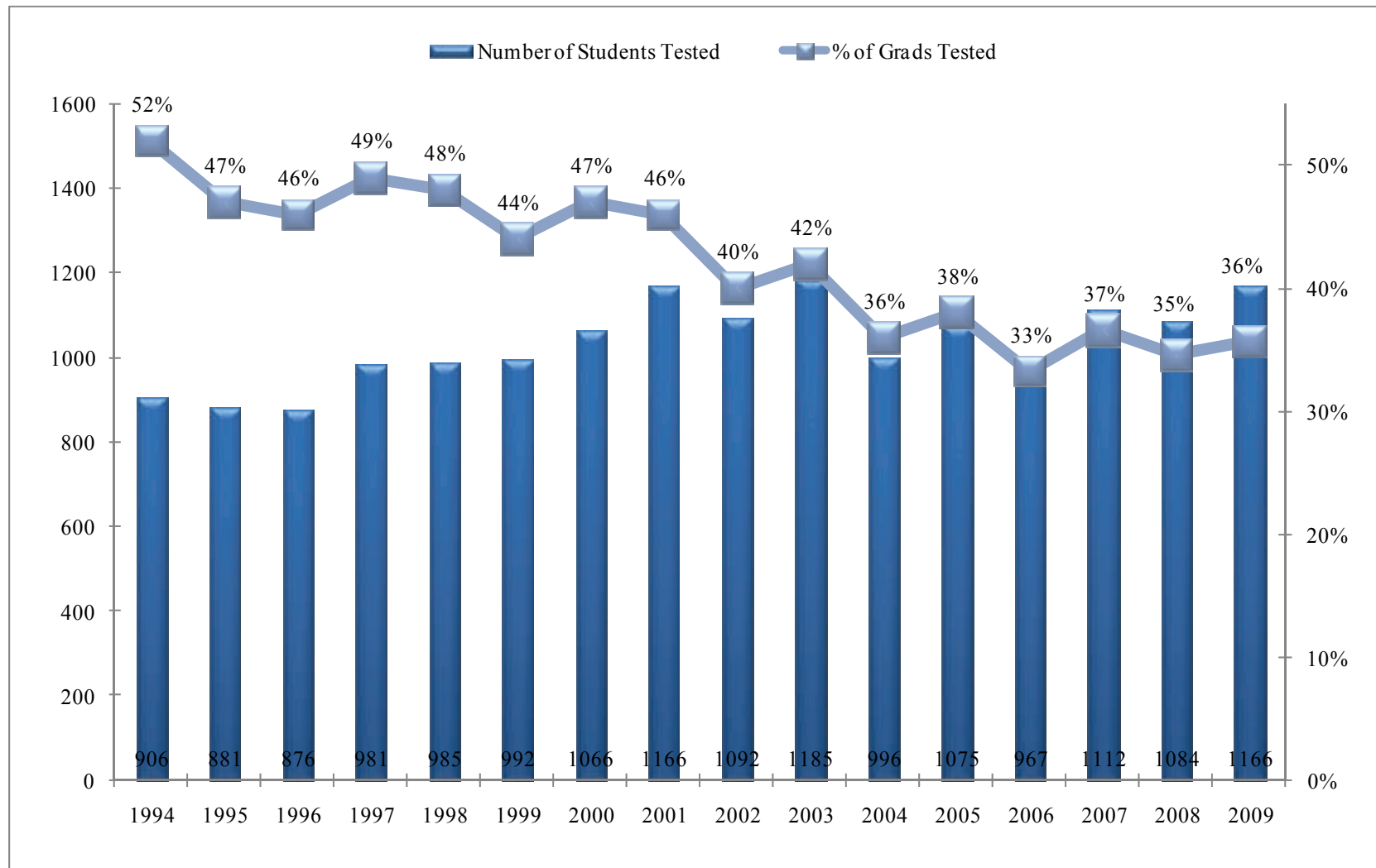
\*The 2006 through 2008 rates have been recalculated to conform to the NDE's Adjusted Cohort Graduation Rate Method. Consequently, numbers reported here differ from previously reported numbers.

'-' denotes too few students to report

# COLLEGE ENTRANCE EXAMS

## ACT Participation

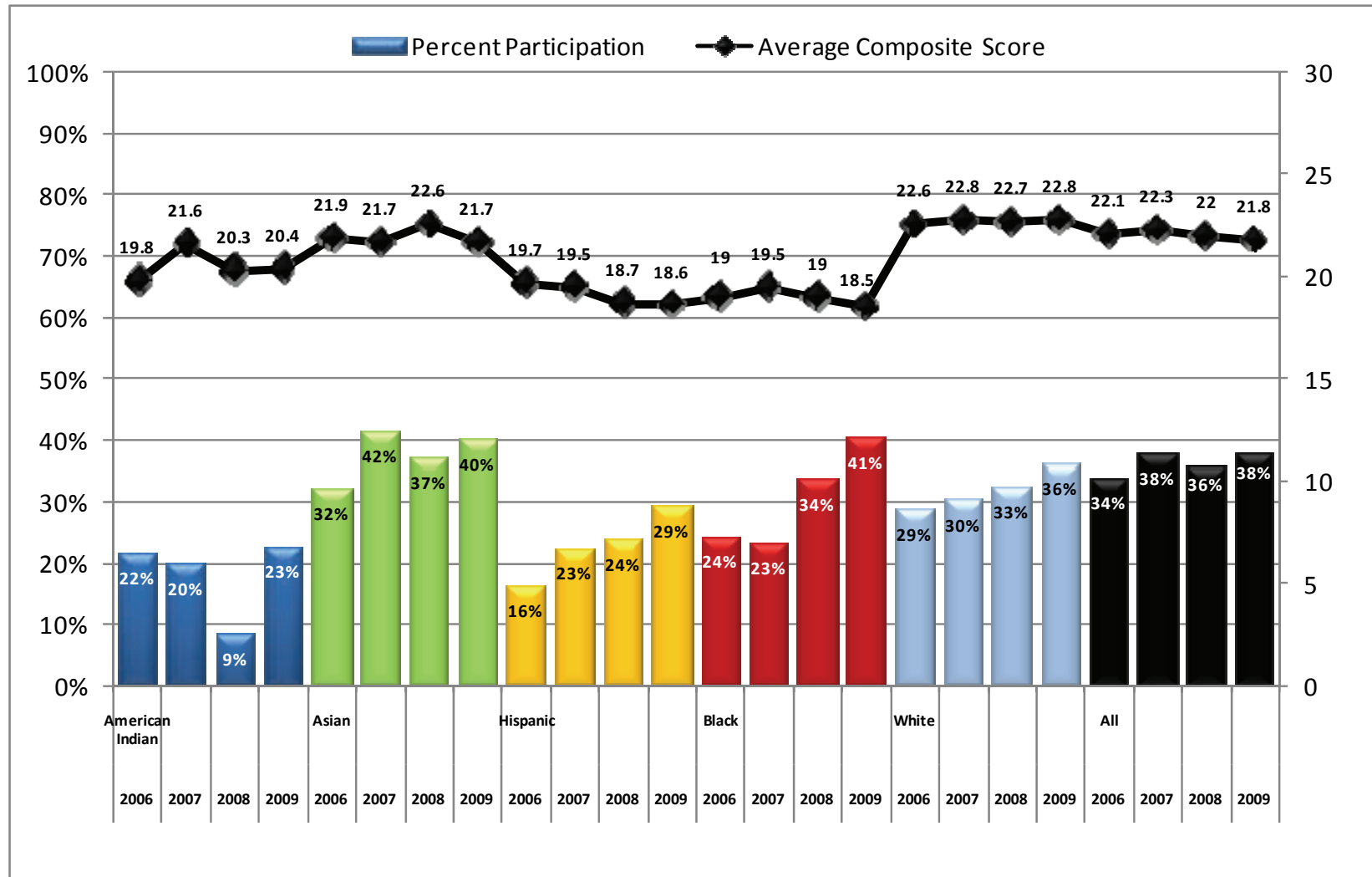
Number and Percentage of WCSD Graduates Who Took the ACT



High School Data: ACT

# COLLEGE ENTRANCE EXAMS

ACT Participation and Average Composite Score by Ethnicity    Percentage of Seniors Who Took the ACT



ACT participation rates on the previous page depict percent of graduates. This chart depicts percent of all seniors (regardless of graduation status).



# COLLEGE ENTRANCE EXAMS

## ACT Participation by High School

## Number and Percentage of WCSD Graduates Who Took the ACT

High Schools	2001		2002		2003		2004		2005		2006		2007		2008		2009	
	N	%	N	%	N	%	N	%	N	%	N	%	N	%	N	%	N	%
AACT	Not Open	Not Open	Not Open	Not Open	Not Open	Not Open	Not Open	Not Open	Not Open	Not Open	-	-	-	-	-	-	-	-
Damonte Ranch	Not Open	Not Open	Not Open	Not Open	Not Open	Not Open	Not Open	Not Open	-	-	-	-	-	-	42	22%	51	28%
Galena	133	46%	178	46%	183	55%	183	48%	164	52%	165	55%	137	46%	198	71%	204	68%
Gerlach	-	-	-	-	-	-	-	-	-	-	-	-	-	-	-	-	-	-
Hug	92	32%	78	25%	48	24%	34	23%	42	24%	38	28%	47	46%	63	41%	119	70%
Incline	31	33%	27	33%	35	42%	-	-	-	-	-	-	39	43%	33	50%	36	49%
McQueen	211	57%	228	55%	229	54%	188	49%	159	42%	163	43%	160	47%	192	56%	202	51%
North Valleys	Not Open	Not Open	Not Open	Not Open	103	45%	101	41%	95	35%	73	27%	83	32%	94	32%	117	41%
Reed	251	56%	225	49%	223	51%	155	40%	206	45%	172	45%	190	47%	198	48%	148	40%
Reno	168	52%	137	43%	124	42%	107	33%	116	36%	118	32%	185	48%	175	49%	202	59%
Spanish Springs	Not Open	Not Open	Not Open	Not Open	72	37%	62	23%	110	39%	60	19%	124	38%	133	38%	140	40%
Sparks	138	48%	109	39%	66	36%	55	37%	48	36%	55	36%	73	60%	60	42%	110	68%
TMCC HS	40	38%	37	30%	-	-	-	-	-	-	-	-	-	-	-	-	22	22%
Washoe	-	-	-	-	-	-	-	-	-	-	-	-	-	-	-	-	-	-
Wooster	90	42%	64	28%	71	40%	65	34%	76	38%	55	31%	33	21%	17	8%	41	19%
<b>Total*</b>	<b>1166</b>	<b>46%</b>	<b>1092</b>	<b>40%</b>	<b>1185</b>	<b>42%</b>	<b>996</b>	<b>36%</b>	<b>1075</b>	<b>38%</b>	<b>967</b>	<b>33%</b>	<b>1112</b>	<b>37%</b>	<b>1084</b>	<b>35%</b>	<b>1166</b>	<b>36%</b>

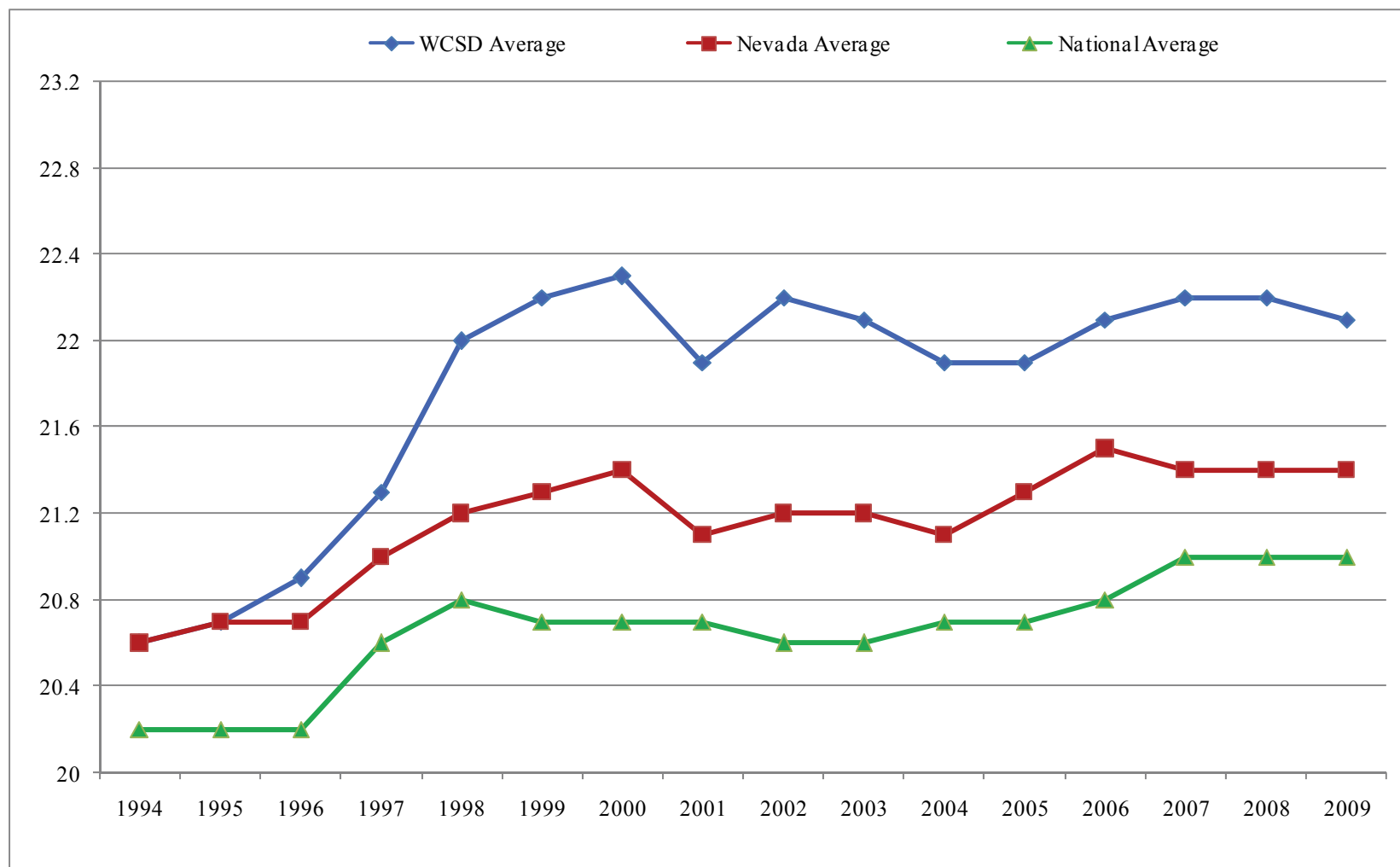
\* Total numbers are higher than the sum of individual schools because AACT, Gerlach, TMCC and Washoe had too few students tested to report. Individual school test data are not published for schools with fewer than 30 ACT participants, but the participants are included in district totals.

“-” Denotes too few students tested to report.

# COLLEGE ENTRANCE EXAMS

## ACT Math Scores

## WCSD, Nevada and National Comparisons



ACT scores are reported on a scale from 1 to 36. For purposes of this comparison the scale has been reduced to enhance visual discrimination.

# COLLEGE ENTRANCE EXAMS

## ACT Math Scores

## By High School

High Schools	2001	2002	2003	2004	2005	2006	2007	2008	2009
AACT	Not Open	Not Open	Not Open	Not Open	Not Open	-	-	-	-
Damonte Ranch	Not Open	Not Open	Not Open	Not Open	-	-	-	22.4	22.6
Galena	22.2	22.1	21.6	22.2	23.5	23.3	23.7	22.6	22.9
Gerlach	-	-	-	-	-	-	-	-	-
Hug	20.9	20.6	19.8	19.5	18.7	18.1	17.8	17.9	17.8
Incline	21.3	21.6	24.5	-	-	-	22.7	22.7	20.9
McQueen	23.3	23.3	23.9	23.3	22.4	22.6	23.2	23.5	23.9
North Valleys	Not Open	Not Open	19.7	20.7	20.1	21.8	20.6	21.2	21.3
Reed	21.1	21.7	22.0	21.1	21.6	22.1	22.0	22.7	21.4
Reno	23.0	24.6	24.5	23.2	23.2	22.8	24.3	23.7	25.1
Spanish Springs	Not Open	Not Open	20.2	20.4	21.6	20.8	20.5	21.9	21.6
Sparks	20.4	19.9	20.5	19.9	19.4	20.2	18.9	18.9	18.4
TMCC	22.4	20.8	-	-	-	-	-	-	-
Washoe	-	-	-	-	-	-	-	-	-
Wooster	22.1	23.1	22.7	22.8	22.9	22.2	25.4	24.8	23.9
<b>WCSD Average*</b>	<b>21.9</b>	<b>22.2</b>	<b>22.1</b>	<b>21.9</b>	<b>21.9</b>	<b>22.1</b>	<b>22.2</b>	<b>22.2</b>	<b>22.1</b>

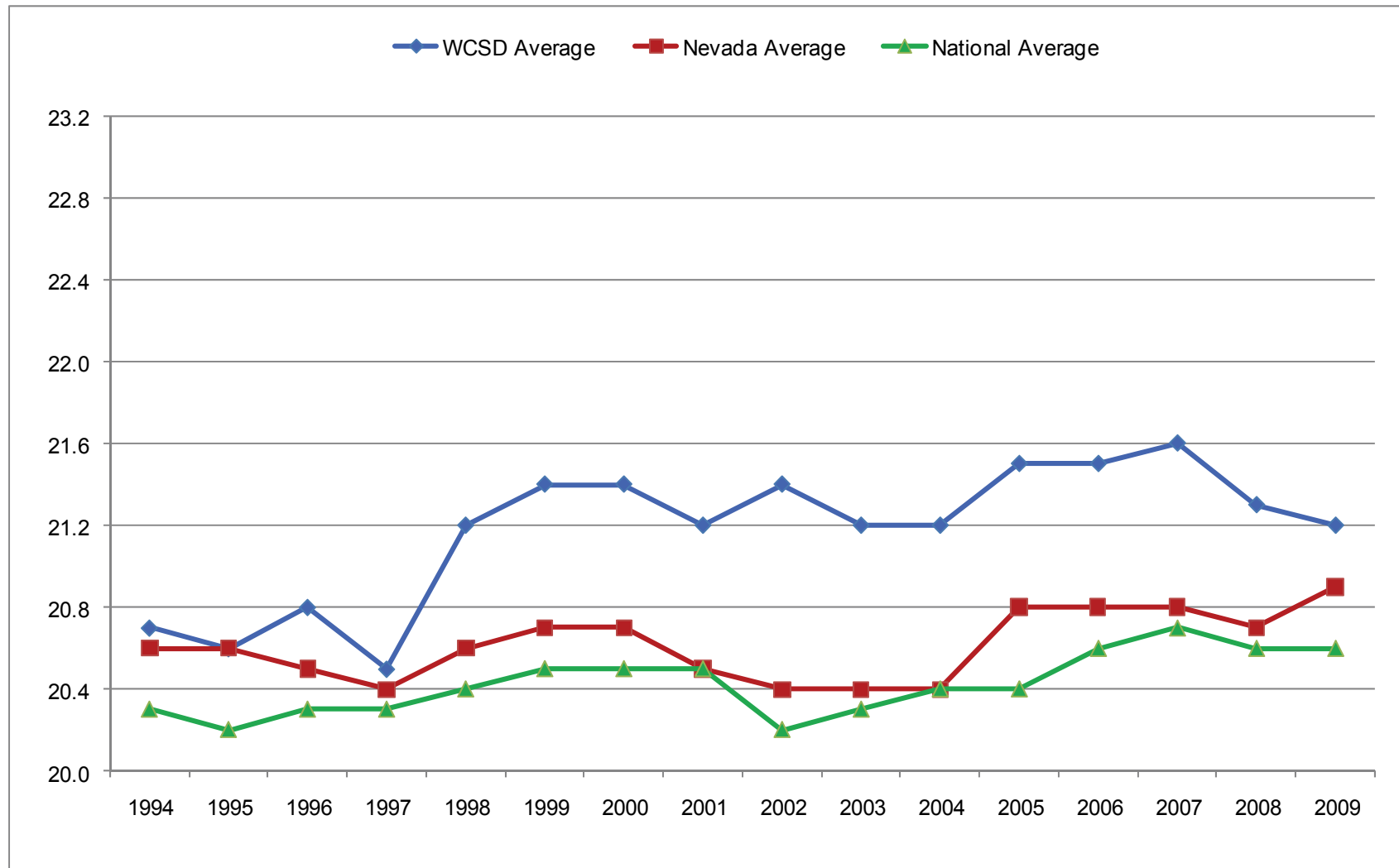
\* The WCSD average is higher than the average of school scores listed in this table because AACT, Damonte Ranch, Gerlach, TMCC and Washoe had fewer than 30 students who took the ACT. Individual school test data are not published for schools with fewer than 30 ACT participants, but the participants' scores are included in district totals.

'-' Denotes too few students tested to report.

# COLLEGE ENTRANCE EXAMS

## ACT English Scores

## WCSD, Nevada and National Comparisons



ACT scores are reported on a scale from 1 to 36. For purposes of this comparison the scale has been reduced to enhance visual discrimination.

# COLLEGE ENTRANCE EXAMS

## ACT English Scores

## By High School

High Schools	2001	2002	2003	2004	2005	2006	2007	2008	2009
AACT	Not Open	Not Open	Not Open	Not Open	Not Open	-	-	-	-
Damonte Ranch	Not Open	Not Open	Not Open	Not Open	-	-	-	21.6	21.1
Galena	21.9	21.9	20.8	22.3	22.9	22.9	23.3	22.3	22.8
Gerlach	-	-	-	-	-	-	-	-	-
Hug	19.3	18.5	18.8	17.8	17.9	17.9	15.8	15.6	15.3
Incline	21.7	22.7	24.0	-	-	-	22.1	23.2	20.5
McQueen	21.7	22.0	22.0	22.3	21.8	21.8	22.8	21.9	22.7
North Valleys	Not Open	Not Open	19.0	19.9	20.1	20.1	20.6	20.9	21.4
Reed	20.3	20.7	21.3	20.1	21.0	21.0	20.7	21.4	20.1
Reno	23.5	23.5	23.5	22.2	23.3	23.3	23.7	22.8	24.1
Spanish Springs	Not Open	Not Open	19.1	20.2	21.4	21.4	19.9	21.1	20.9
Sparks	20.3	19.9	20.6	19.1	19.8	19.8	18.9	18.2	16.8
TMCC	-	-	-	-	-	-	-	-	-
Washoe	-	-	-	-	-	-	-	-	-
Wooster	20.9	20.5	21.5	21.3	21.8	21.8	24.5	23.2	22.9
<b>WCSD Average*</b>	<b>21.2</b>	<b>21.4</b>	<b>21.2</b>	<b>21.2</b>	<b>21.5</b>	<b>21.5</b>	<b>21.6</b>	<b>21.3</b>	<b>21.2</b>

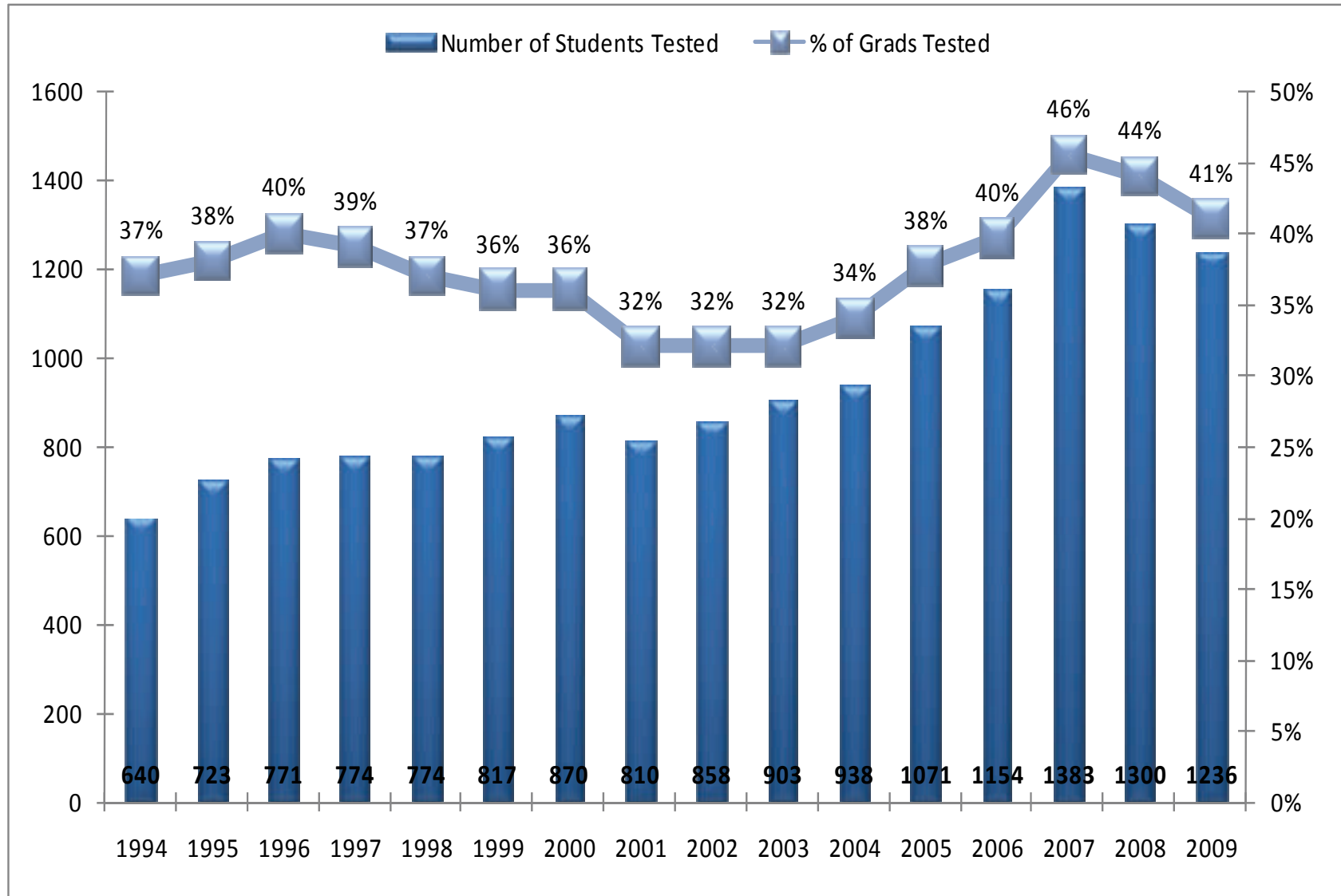
\* The WCSD average is higher than the average of school scores listed in this table because AACT, Damonte Ranch, Gerlach, TMCC and Washoe had fewer than 30 students who took the ACT. Individual school test data are not published for schools with fewer than 30 ACT participants, but the participants' scores are included in district totals.

'-' Denotes too few students tested to report.

# COLLEGE ENTRANCE EXAMS

## SAT Participation

Number and Percentage of WCSD Graduates Who Took the SAT

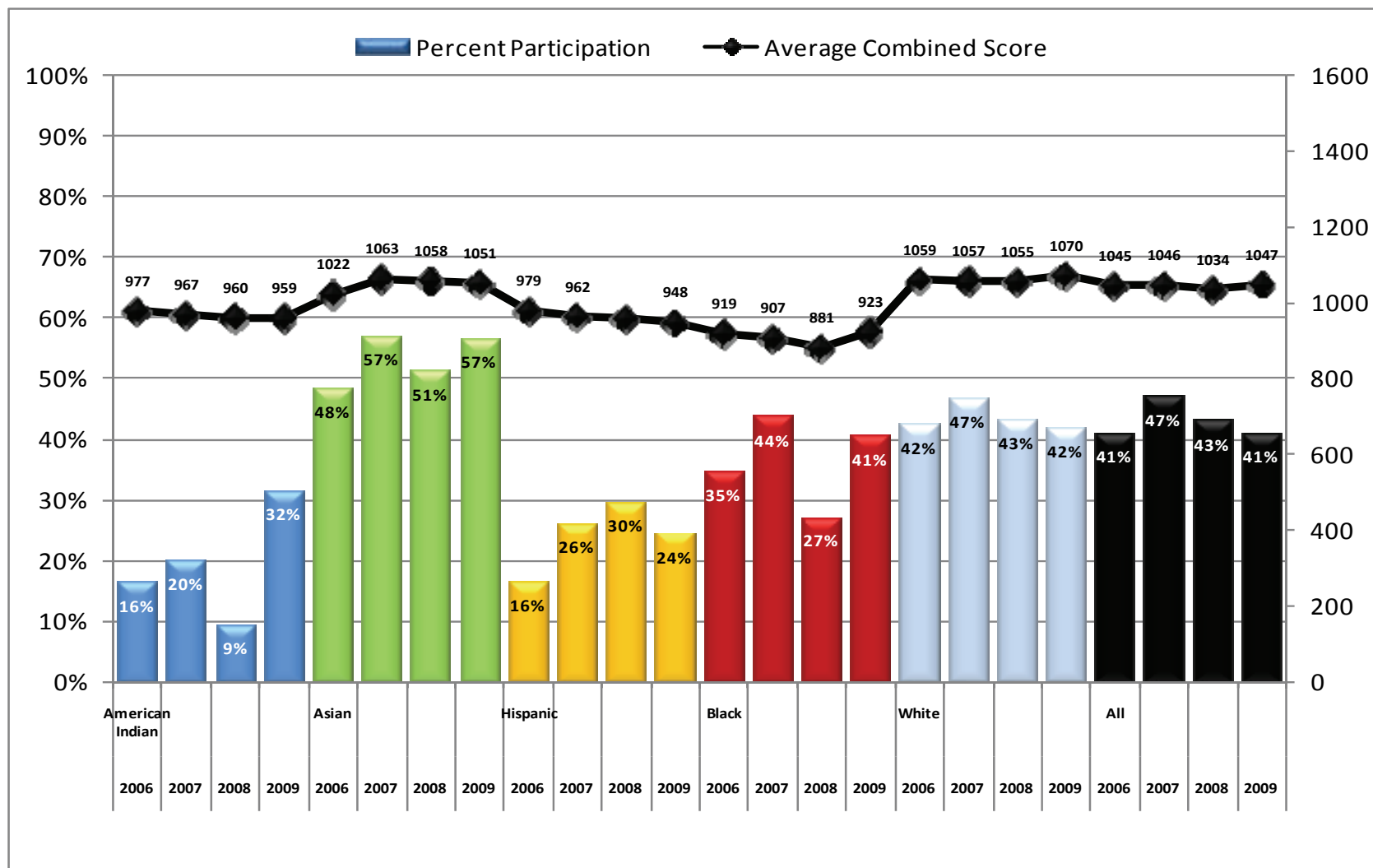


High School Data: SAT

# COLLEGE ENTRANCE EXAMS

SAT Participation and Average Combined Math-Reading Score by Ethnicity

Percentage of Seniors Who Took the SAT



SAT participation rates on the previous page depict percent of graduates. This chart depicts percent of all seniors (regardless of graduation status).

# COLLEGE ENTRANCE EXAMS

## SAT Participation by High School

Number and Percentage of WCSD Graduates Who Took the SAT

High Schools	2001		2002		2003		2004		2005		2006		2007		2008		2009	
	N	%	N	%	N	%	N	%	N	%	N	%	N	%	N	%	N	%
AACT	Not Open	Not Open	Not Open	Not Open	Not Open	Not Open	Not Open	Not Open	Not Open	Not Open	-	-	-	-	-	-	-	-
Damonte Ranch	Not Open	Not Open	Not Open	Not Open	Not Open	Not Open	Not Open	Not Open	-	-	53	49%	76	55%	102	52%	91	50%
Galena	134	46%	190	49%	163	49%	166	43%	195	62%	155	51%	181	61%	186	68%	173	58%
Gerlach	-	-	-	-	-	-	-	-	-	-	-	-	-	-	-	-	-	-
Hug	46	16%	32	10%	-	-	-	-	21	12%	28	21%	46	45%	47	31%	53	31%
Incline	53	57%	48	59%	54	64%	45	55%	45	58%	38	50%	69	76%	42	64%	50	68%
McQueen	121	32%	140	34%	152	36%	153	40%	172	46%	162	43%	174	51%	188	56%	204	53%
North Valleys	Not Open	Not Open	Not Open	Not Open	39	17%	44	18%	67	25%	82	30%	93	36%	84	29%	73	25%
Reed	125	28%	135	30%	119	27%	118	31%	162	36%	158	41%	194	48%	154	38%	130	36%
Reno	191	69%	189	60%	211	72%	200	61%	192	59%	240	64%	285	74%	220	61%	211	61%
Spanish Springs	Not Open	Not Open	Not Open	Not Open	23	12%	95	35%	85	30%	134	42%	139	43%	143	41%	132	38%
Sparks	43	15%	23	8%	-	-	-	-	-	-	-	-	25	20%	25	17%	7	4%
TMCC HS	29	27%	34	28%	29	32%	21	23%	24	37%	20	22%	20	25%	20	22%	20	20%
Washoe	-	-	-	-	-	-	-	-	-	-	-	-	-	-	-	-	-	-
Wooster	63	30%	61	26%	61	35%	69	36%	81	40%	68	38%	81	51%	84	41%	87	40%
<b>Total*</b>	<b>810</b>	<b>32%</b>	<b>858</b>	<b>32%</b>	<b>901</b>	<b>32%</b>	<b>938</b>	<b>34%</b>	<b>1071</b>	<b>38%</b>	<b>1154</b>	<b>40%</b>	<b>1383</b>	<b>46%</b>	<b>1300</b>	<b>44%</b>	<b>1236</b>	<b>41%</b>

\* Total numbers are higher than the sum of individual schools because AACT, Gerlach and Washoe had too few students tested to report. Individual school test data are not published for schools with fewer than 20 SAT participants, but the participants are included in district totals.

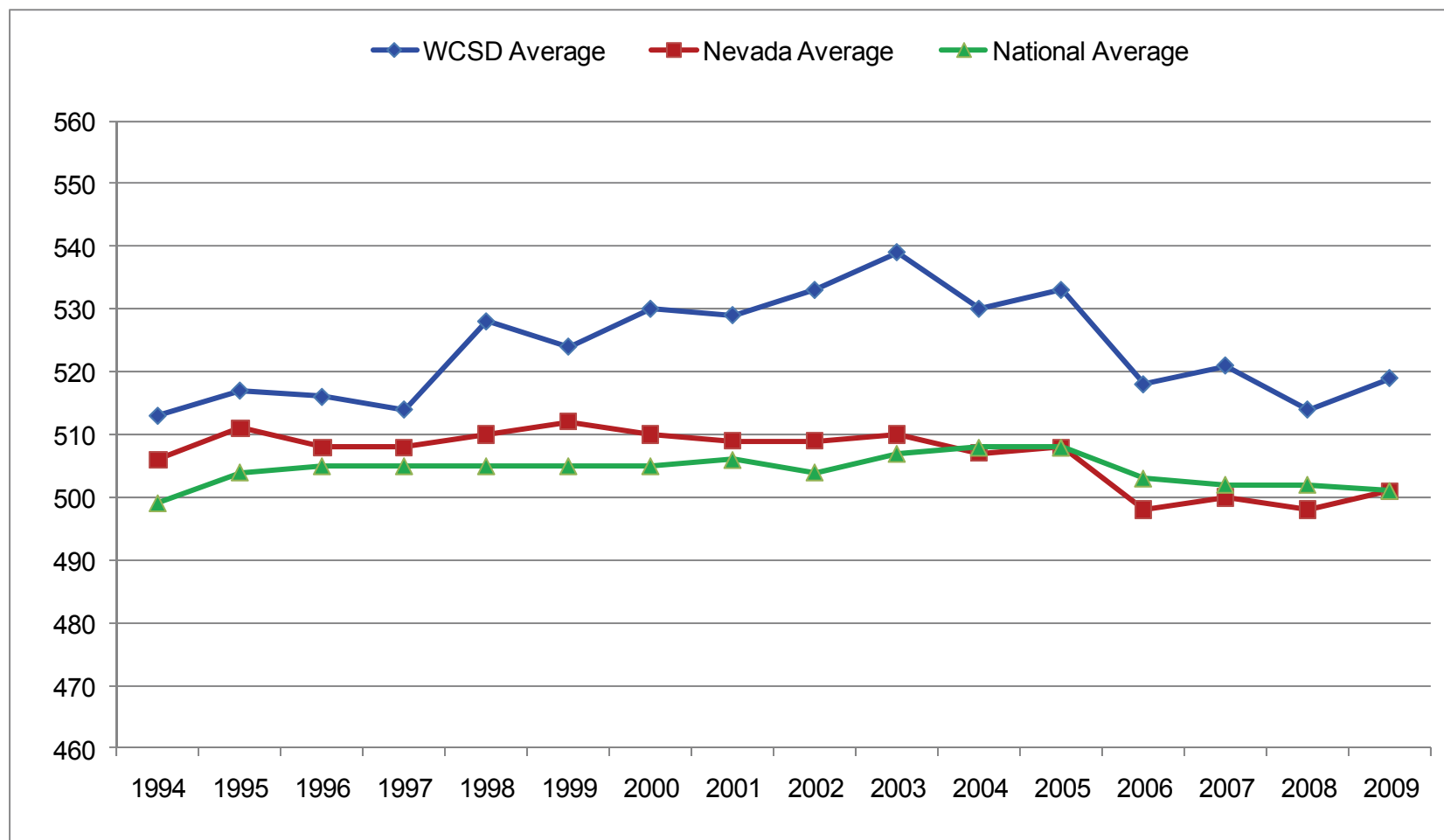
“-” Denotes too few students tested to report.



# COLLEGE ENTRANCE EXAMS

## SAT Verbal Scores

## WCSD, Nevada and National Comparisons



SAT Verbal scores range from 200 - 800, with 500 considered average. For purposes of this comparison, the scale has been reduced to enhance visual discrimination. The SAT was re-centered for the 1993-1994 and 1994-1995 school years; score comparisons from previous years are not valid. Substantial changes to the SAT format and content were instituted in March 2005 and are first reflected in the 2005-2006 scores.

# COLLEGE ENTRANCE EXAMS

## SAT Verbal Scores

## By High School

High Schools	2001	2002	2003	2004	2005	2006	2007	2008	2009
AACT	Not Open	Not Open	Not Open	Not Open	Not Open	-	-	-	-
Damonte Ranch	Not Open	Not Open	Not Open	Not Open	Not Open	-	496	508	494
Galena	526	519	531	533	533	539	544	528	533
Gerlach	-	-	-	-	-	-	-	-	-
Hug	515	479	-	-	-	457	414	418	390
Incline	540	526	533	545	545	549	523	547	491
McQueen	530	549	564	555	555	523	532	513	525
North Valleys	Not Open	Not Open	486	511	511	490	487	500	507
Reed	510	517	534	510	510	506	505	510	499
Reno	549	559	558	549	549	538	557	527	562
Spanish Springs	Not Open	Not Open	484	486	486	492	508	499	506
Sparks	492	532	-	-	-	-	475	437	472
TMCC	580	571	559	534	534	551	561	565	561
Washoe	-	-	-	-	-	-	-	-	-
Wooster	522	512	525	514	514	516	511	549	539
<b>WCSD Average*</b>	<b>529</b>	<b>533</b>	<b>539</b>	<b>530</b>	<b>530</b>	<b>518</b>	<b>521</b>	<b>514</b>	<b>519</b>

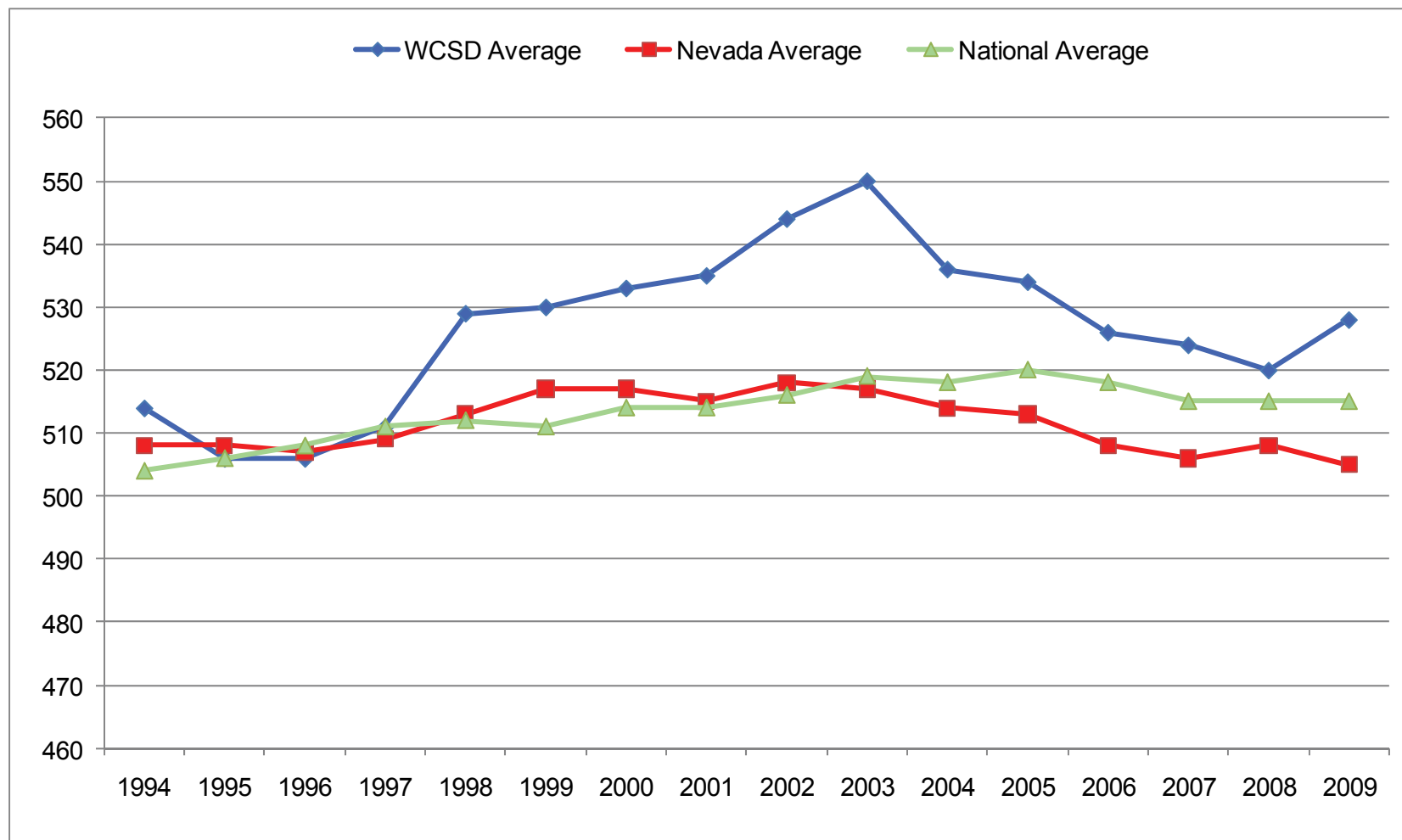
\* The WCSD average is higher than the average of school scores listed in this table because AACT, Gerlach and Washoe had fewer than 20 students who took the SAT. Individual school test data are not published for schools with fewer than 20 SAT participants, but the participants' scores are included in district totals.

'-' Denotes too few students tested to report.

# COLLEGE ENTRANCE EXAMS

## SAT Math Scores

## WCSD, Nevada and National Comparisons



SAT Math scores range from 200 - 800, with 500 considered average. For purposes of this comparison, the scale has been reduced to enhance visual discrimination. The SAT was re-centered for the 1993-1994 and 1994-1995 school years; score comparisons from previous years are not valid. Substantial changes to the SAT format and content were instituted in March 2005 and are first reflected in the 2005-2006 scores.

# COLLEGE ENTRANCE EXAMS

## SAT Math Scores

## By High School

High Schools	2001	2002	2003	2004	2005	2006	2007	2008	2009
AACT	Not Open	Not Open	Not Open	Not Open	Not Open	-	-	-	-
Damonte Ranch	Not Open	Not Open	Not Open	Not Open	-	-	488	506	508
Galena	527	529	534	535	547	550	544	527	542
Gerlach	-	-	-	-	-	-	-	-	-
Hug	523	522	-	-	-	450	433	430	422
Incline	549	530	564	553	544	554	526	541	502
McQueen	552	562	579	564	540	534	537	533	543
North Valleys	Not Open	Not Open	511	500	490	492	485	503	488
Reed	517	533	546	526	531	529	525	521	516
Reno	546	560	566	550	556	538	554	539	562
Spanish Springs	Not Open	Not Open	500	493	515	497	505	500	519
Sparks	514	536	-	-	-	-	443	442	477
TMCC	549	551	550	566	530	513	556	554	513
Washoe	-	-	-	-	-	-	-	-	-
Wooster	536	545	534	546	537	536	530	554	562
<b>WCSD Average*</b>	<b>535</b>	<b>544</b>	<b>550</b>	<b>536</b>	<b>534</b>	<b>526</b>	<b>524</b>	<b>520</b>	<b>528</b>

\* The WCSD average is higher than the average of school scores listed in this table because some schools had fewer than 20 students who took the SAT in a given year. Individual school test data are not published for schools with fewer than 20 SAT participants, but the participants' scores are included in district totals.

'-' Denotes too few students tested to report.

# THE GATEWAY CURRICULUM

In December 2004, the Washoe County School District Board of Trustees adopted the Gateway Curriculum as the default course of study for high school students. The Gateway Curriculum requirement took effect with freshmen entering in the fall of 2006.

All high school students are automatically enrolled in the Gateway Curriculum, but provisions for exemptions are available. Potential exemptions include:

- ∞ Special Education students whose *Individualized Education Plan* (IEP), specifies exemption from the Gateway Curriculum.
- ∞ Students actively receiving *English as a Second Language* (ESL) services may be exempt, if it is determined that the Gateway Curriculum is educationally inappropriate for them.
- ∞ Students who transfer into a WUSD high school in their junior or senior year who would not be able to enroll in the required fourth math and/or third science courses during their remaining school year(s).
- ∞ Students exempted through the formal opt-out procedure established by the Office of Secondary Education.

The Gateway Curriculum requires students to enroll in four math courses and three science courses in addition to the other courses required for graduation, and further requires that students enroll in at least six courses during their senior year.

The intended Gateway math enrollment sequence is Algebra 1-2, Geometry, Algebra 3-4, and one post-Algebra 3-4 course. Students who enroll but fail to earn credits in any of the math sequence courses adhere to the Gateway Curriculum by re-enrolling in the failed course or obtaining approval to enroll in a different math course the following year.

The intended Gateway science enrollment sequence is Biology, Physical Science or Chemistry, plus one additional third or fourth year science course. As with the math sequence, students who enroll but fail to earn credits in any of the science sequence courses adhere to the Gateway Curriculum by re-enrolling in the failed course or obtaining approval to enroll in a different science course the following year.

Seniors may meet the Gateway requirement of enrolling in at least six courses by combining required, elective, online, correspondence, work-study and dual-credit college courses, or by enrolling in other courses approved by the Office of Secondary Education.

# GATEWAY CURRICULUM

Percentage of Seniors Enrolling in Four Years of Math and Three Years of Science

School	Enrolled in 4 years of Math			Enrolled in 3 years of Science		
	Class of 2008	Class of 2009		Class of 2008	Class of 2009	
	% of Seniors	N	% of Seniors	% of Seniors	N	% of Seniors
AACT	18%	10	20%	58%	35	69%
Damonte Ranch	40%	101	52%	98%	174	89%
Galena	58%	200	68%	85%	272	92%
Gerlach	0%	2	33%	100%	6	86%
Hug	40%	88	52%	73%	106	62%
Incline	32%	31	42%	94%	68	92%
McQueen	61%	289	76%	92%	349	91%
North Valleys	57%	203	71%	80%	264	92%
Reed	47%	220	61%	90%	313	87%
Reno	58%	250	73%	90%	316	92%
Spanish Springs	42%	230	66%	91%	318	92%
Sparks	49%	85	53%	84%	133	82%
TMCC	7%	6	6%	35%	35	35%
Wooster	10%	53	25%	68%	171	79%
<b>WCSD</b>	<b>46%</b>	<b>1768</b>	<b>59%</b>	<b>86%</b>	<b>2560</b>	<b>87%</b>

Washoe High School has unique scheduling options, so it is not included.

# GATEWAY CURRICULUM

## Percentage of Seniors Taking Four, Five and Six or More Classes

High Schools	Four Classes				Five Classes				Six or More Classes			
	Class of 2006	Class of 2007	Class of 2008	Class of 2009	Class of 2006	Class of 2007	Class of 2008	Class of 2009	Class of 2006	Class of 2007	Class of 2008	Class of 2009
AACT	N/A	N/A	53%	56%	N/A	N/A	27%	22%	N/A	N/A	20%	22%
Damonte Ranch	24%	17%	14%	12%	19%	23%	30%	14%	56%	60%	56%	73%
Galena	36%	27%	29%	27%	34%	37%	34%	33%	30%	36%	36%	41%
Gerlach	14%	0%	-	-	0%	0%	-	-	86%	100%	100%	100%
Hug	29%	2%	13%	10%	28%	15%	16%	14%	43%	83%	71%	76%
Incline	20%	19%	9%	16%	26%	26%	37%	35%	54%	55%	54%	49%
McQueen	20%	20%	17%	9%	35%	30%	28%	23%	45%	50%	55%	68%
North Valleys	20%	22%	23%	19%	32%	27%	30%	27%	48%	51%	47%	55%
Reed	5%	30%	25%	18%	37%	30%	26%	27%	59%	39%	49%	55%
Reno	41%	39%	32%	29%	28%	33%	33%	33%	31%	28%	35%	38%
Spanish Springs	27%	27%	3%	2%	36%	27%	31%	32%	37%	45%	66%	66%
Sparks	4%	6%	1%	1%	18%	16%	18%	15%	78%	79%	80%	84%
TMCC	N/A	N/A	19%	21%	N/A	N/A	34%	22%	N/A	N/A	48%	56%
Washoe	N/A	N/A	53%	61%	N/A	N/A	19%	10%	N/A	N/A	28%	29%
Wooster	33%	2%	24%	13%	31%	23%	19%	21%	36%	75%	57%	66%
<b>Total</b>	<b>24%</b>	<b>23%</b>	<b>20%</b>	<b>17%</b>	<b>31%</b>	<b>28%</b>	<b>28%</b>	<b>26%</b>	<b>45%</b>	<b>49%</b>	<b>52%</b>	<b>59%</b>

\* AACT, TMCC and Washoe high schools have unique scheduling options.

# EARNED CREDITS IN MATH

## Percentage of Seniors Who Earned Advanced Math Credits

School	Algebra 3-4		Trigonometry/Pre-Calculus		Probability/Statistics/Discrete Math		Calculus and AP/IB Calculus		AP Statistics		Advanced Algebra 5-6*
	2008	2009	2008	2009	2008	2009	2008	2009	2008	2009	2009
AACT	76%	65%	3%	14%	3%	4%	0%	0%	0%	0%	0%
Damonte Ranch	69%	68%	23%	33%	15%	28%	6%	10%	0%	5%	0%
Galena	76%	81%	34%	37%	39%	46%	15%	17%	5%	14%	0%
Gerlach	75%	86%	25%	29%	0%	0%	0%	0%	0%	0%	0%
Hug	50%	70%	20%	25%	0%	12%	5%	5%	0%	0%	14%
Incline	86%	82%	26%	42%	0%	0%	15%	8%	0%	0%	0%
McQueen	87%	89%	45%	57%	6%	8%	18%	17%	6%	6%	10%
North Valleys	76%	83%	31%	36%	37%	41%	8%	7%	7%	3%	11%
Reed	63%	67%	33%	30%	13%	20%	16%	12%	7%	7%	4%
Reno	82%	86%	36%	49%	23%	22%	9%	17%	14%	23%	8%
Spanish Springs	76%	76%	32%	34%	9%	10%	7%	7%	0%	11%	11%
Sparks	83%	82%	34%	27%	17%	15%	11%	9%	0%	0%	0%
TMCC	82%	70%	11%	8%	0%	2%	0%	1%	1%	0%	0%
Washoe	0%	0%	0%	0%	0%	0%	0%	0%	0%	0%	0%
Wooster	30%	40%	16%	22%	0%	8%	8%	10%	1%	1%	0%
Total	72%	76%	31%	36%	16%	20%	11%	11%	5%	7%	6%

Gerlach percentages are based on very small numbers of students (usually fewer than 10)

Washoe High School is an alternative school.

\*Advanced Algebra 5-6 was not offered until the 2008-2009 school year



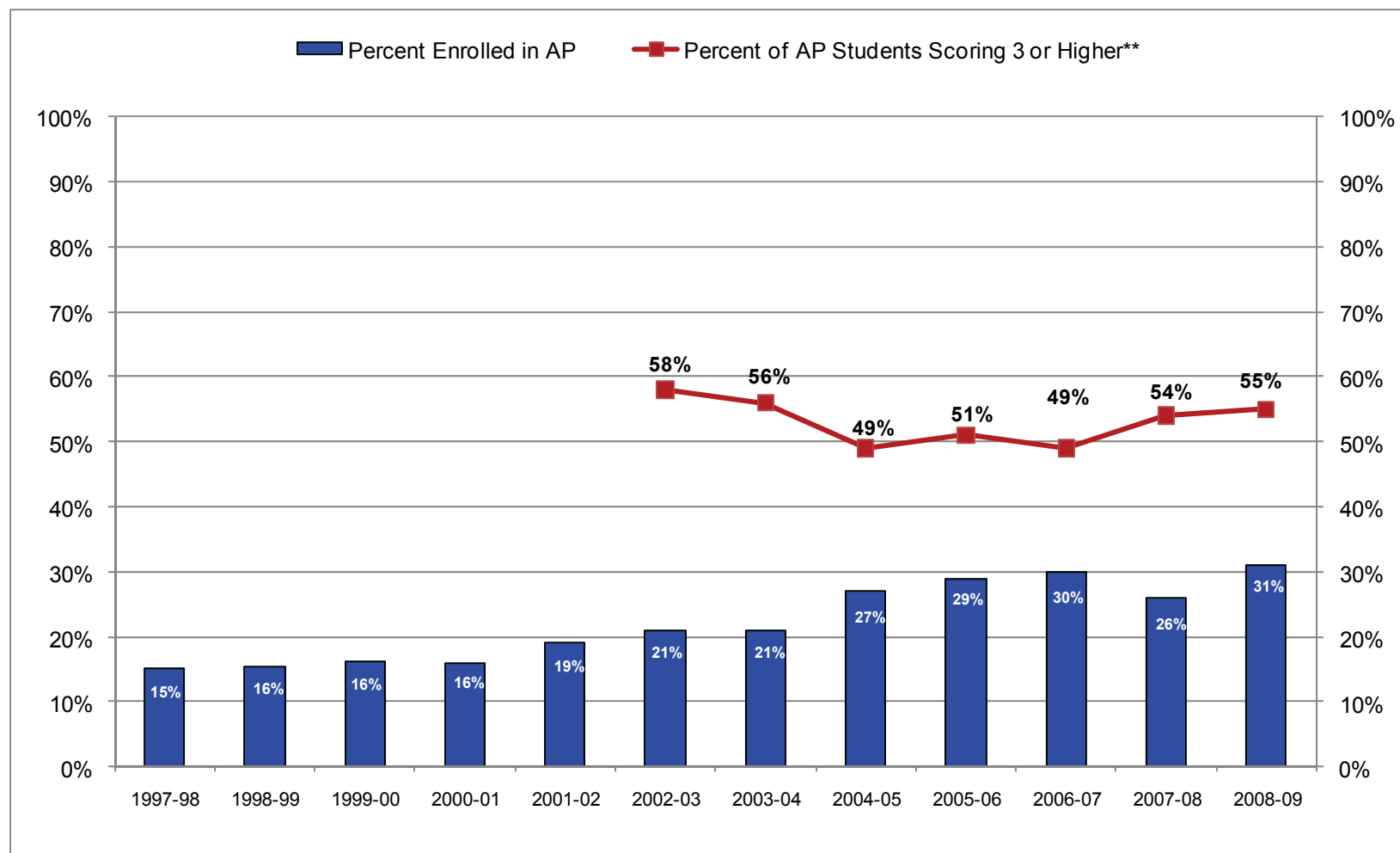
## PERCENTAGE OF SENIORS EARNING THREE CREDITS IN SCIENCE AND FOUR CREDITS IN MATH

High Schools	Earned 3 Science Credits						Earned 4 Math Credits					
	Class of 2004	Class of 2005	Class of 2006	Class of 2007	Class of 2008	Class of 2009	Class of 2004	Class of 2005	Class of 2006	Class of 2007	Class of 2008	Class of 2009
AACT	No Seniors	No Seniors	40%	45%	46%	53%	No Seniors	No Seniors	7%	18%	8%	26%
Damonte Ranch	No Seniors	51%	60%	66%	79%	81%	No Seniors	18%	23%	31%	44%	62%
Galena	80%	80%	74%	78%	81%	85%	40%	60%	50%	49%	66%	74%
Gerlach	44%	33%	86%	100%	100%	83%	78%	33%	0%	0%	25%	50%
Hug	46%	50%	53%	53%	54%	49%	24%	33%	26%	27%	35%	48%
Incline	56%	65%	70%	71%	83%	76%	40%	42%	37%	38%	36%	51%
McQueen	70%	81%	75%	78%	85%	86%	47%	56%	46%	58%	61%	78%
North Valleys	65%	69%	69%	75%	72%	79%	35%	42%	42%	49%	58%	69%
Reed	71%	77%	74%	67%	82%	79%	42%	50%	53%	32%	47%	55%
Reno	86%	89%	85%	87%	87%	88%	56%	57%	59%	62%	65%	80%
Spanish Springs	64%	66%	73%	77%	80%	83%	26%	37%	41%	45%	44%	66%
Sparks	76%	60%	77%	74%	73%	72%	60%	25%	29%	37%	49%	45%
TMCC	48%	54%	60%	48%	34%	34%	5%	20%	21%	22%	12%	13%
Washoe	9%	8%	25%	17%	16%	28%	2%	2%	1%	3%	2%	6%
Wooster	53%	54%	37%	75%	62%	68%	21%	43%	25%	51%	33%	51%
<b>Total</b>	<b>67%</b>	<b>69%</b>	<b>69%</b>	<b>72%</b>	<b>75%</b>	<b>76%</b>	<b>38%</b>	<b>45%</b>	<b>41%</b>	<b>44%</b>	<b>49%</b>	<b>61%</b>

Gerlach percentages are based on very small numbers of students (usually fewer than 10)  
Washoe High School is an alternative school.

# ADVANCED PLACEMENT / IB

## Percentage of WCSD Juniors and Seniors Enrolled in Advanced Placement or IB\* Courses



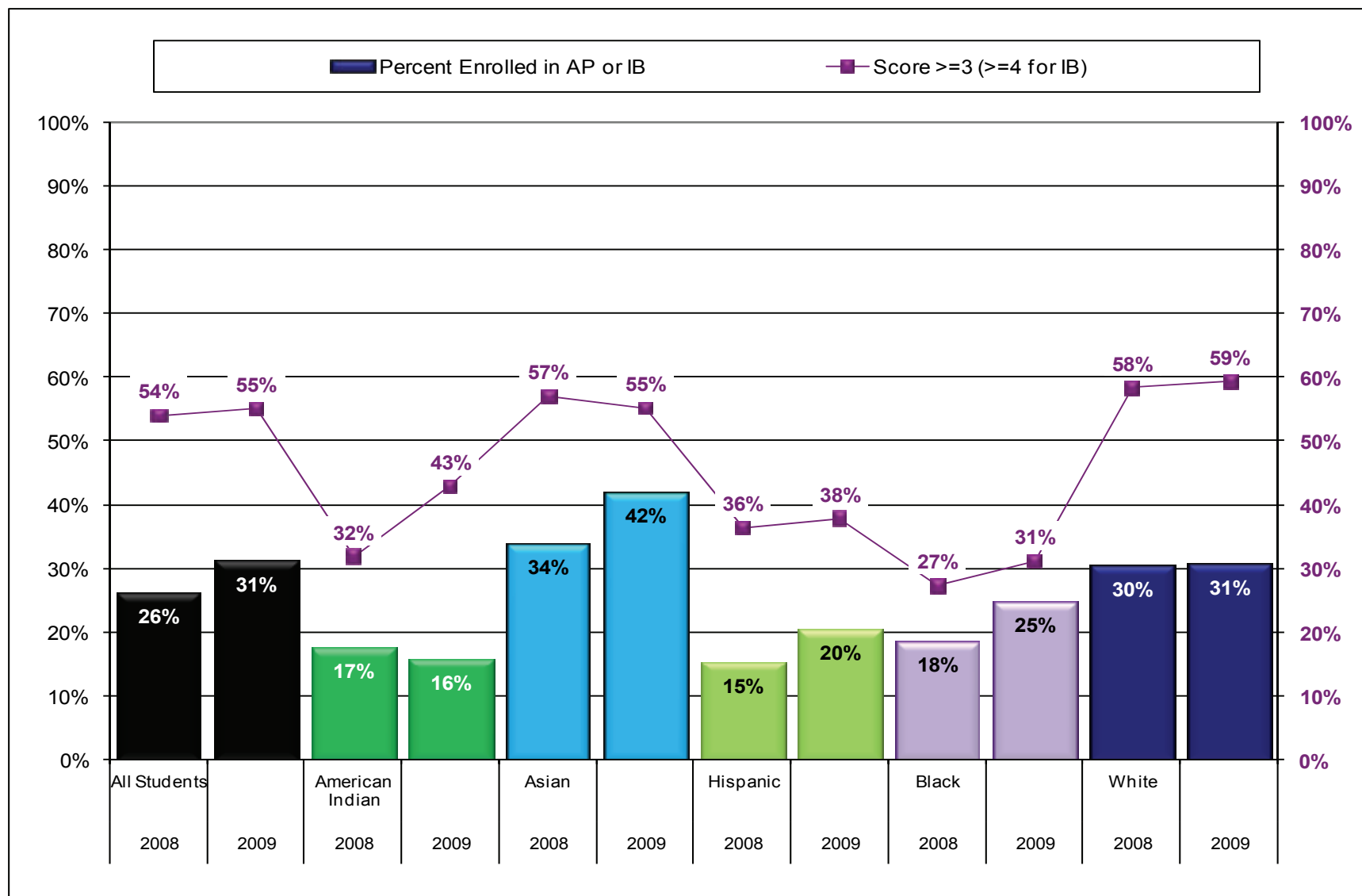
\* International Baccalaureate Program

\*\* Data on percentage scoring 3 or higher are not available prior to 2003; percentage includes IB scores of 4 or higher.

Data have been corrected for previous years.

# ADVANCED PLACEMENT / IB

Percentage of 11th and 12th Grade Students Enrolling in at Least One AP or IB Course and Percentage of AP/IB Students Scoring 3 or Higher on at Least One AP Exam (4 or Higher on IB Exams)



# ENROLLMENT IN ADVANCED PLACEMENT / IB\* COURSES

Percentage of Juniors and Seniors by School Who Took at Least One Advanced Placement or IB\* Course

High School	2000-01	2001-02	2002-03	2003-04	2004-05	2005-06	2006-07	2007-08	2008-09	
	Percent Participation	Percent Participation	Percent Participation	Percent Participation	Percent Participation	Percent Participation	Percent Participation	Percent Participation	Number of AP Students	Percent Participation
Damonte Ranch	Not Open	Not Open	Not Open	-	26%	29%	29%	25%	143	30%
Galena	24%	27%	30%	36%	39%	43%	47%	43%	331	52%
Gerlach	-	20%	-	24%	8%	30%	50%	42%	2	22%
Hug	7%	7%	11%	8%	15%	23%	31%	21%	109	25%
Incline	28%	29%	27%	29%	31%	35%	34%	27%	63	38%
McQueen	24%	29%	30%	34%	33%	35%	38%	34%	341	41%
North Valleys	Not Open	12%	10%	13%	26%	34%	21%	16%	124	17%
Reed	9%	17%	16%	15%	18%	24%	32%	28%	285	32%
Reno	25%	32%	39%	35%	39%	36%	35%	32%	310	40%
Spanish Springs	Not Open	4%	7%	10%	16%	24%	25%	21%	223	26%
Sparks	8%	20%	24%	23%	24%	39%	36%	27%	124	34%
Wooster	12%	15%	14%	15%	21%	28%	39%	53%	314	55%
<b>All High Schools</b>	<b>16%</b>	<b>19%</b>	<b>21%</b>	<b>21%</b>	<b>27%</b>	<b>29%</b>	<b>30%</b>	<b>26%</b>	<b>2369</b>	<b>31%</b>

\* International Baccalaureate Program

AP classes are not offered at AACT, TMCC or Washoe

'-' Denotes no students enrolled or too few students to report.

Data have been corrected for previous years.

# PERFORMANCE IN ADVANCED PLACEMENT / IB\*

Percent of Students Scoring 3 or Higher on AP Exams\*\*

High School	% of AP Students Scoring 3 or higher on AP Exams					
	2003-04	2004-05	2005-06	2006-07	2007-2008	2008-2009
Damonte Ranch	33%	21%	41%	37%	43%	50%
Galena	59%	61%	69%	68%	62%	67%
Gerlach	-	-	-	-	-	-
Hug	25%	20%	7%	8%	9%	13%
Incline	70%	70%	75%	75%	73%	79%
McQueen	71%	58%	62%	63%	72%	63%
North Valleys	26%	28%	32%	32%	44%	44%
Reed	55%	47%	47%	39%	45%	34%
Reno	65%	65%	66%	66%	70%	75%
Spanish Springs	49%	51%	35%	43%	56%	57%
Sparks	19%	10%	17%	14%	15%	21%
TMCC	-	-	-	-	-	-
Washoe	-	-	-	-	-	-
Wooster	32%	40%	46%	44%	68%	68%
<b>WCSD</b>	<b>56%</b>	<b>49%</b>	<b>51%</b>	<b>49%</b>	<b>56%</b>	<b>56%</b>

\* International Baccalaureate Program

\*\* Data are not available for 2001-2003; includes IB students scoring 4 or higher

AP classes are not offered at AACT, TMCC or Washoe

‘-’ Denotes no students enrolled or too few students to report.

# ADVANCED PLACEMENT CHALLENGE INDEX

The Challenge Index, developed by *Washington Post* education writer Jay Mathews, measures a public high school's effort to challenge its students. The Index is calculated by dividing the number of AP or IB or exams taken by the number of seniors who graduated in June. Exam scores are not included in the calculation and exams taken by all students, not just seniors, are counted. The rating is not a measurement of the overall quality of the school but illuminates one factor that many educators and researchers consider important. For purposes of this calculation, the WCSD graduating class includes all students who earned a diploma plus those students who had enough credits to graduate but failed one or more sections of a state-mandated graduation exam. A Challenge Index of 1.0 or higher meets the benchmark defined by the measure's author.

School	Class of 2005		Class of 2006		Class of 2007		Class of 2008		Class of 2009***
	Challenge Index	National Ranking**	Challenge Index	National Ranking**	Challenge Index	National Ranking**	Challenge Index	National Ranking**	Challenge Index
Damonte Ranch	1.2	-	1.2	1014	1.3	1089	0.9	-	1.2
Galena	1.7	531	1.9	509	1.7	535	1.7	887	2.1
Hug	0.7	-	1.1	1201	1.4	1289	1.1	1431	1.2
Incline	1.4	835	1.6	690	1.5	732	1.5	1041	1.9
McQueen	1.8	488	1.6	684	1.8	724	1.9	695	2.0
North Valleys	1.2	1045	1.6	736	1.4	783	1.1	1454	1.0
Reed	0.9	-	1.1	1162	1.2	1248	1.1	1419	1.4
Reno	1.6	650	1.6	732	1.6	780	1.5	1000	2.0
Spanish Springs	0.7	-	1.0	1219	1.0	1309	0.8	-	1.1
Sparks	1.3	868	1.5	754	1.7	803	1.4	1106	1.8
Wooster*	1.6	495	1.7	598	1.7	630	2.8	243	1.9

\* Wooster offers both AP courses and the International Baccalaureate Program (IB)

\*\* National rankings published in Newsweek. All of the ranked schools have an index of at least 1.0 and are in the top 5 percent of the nation's public schools on this measure.

Source: The Complete List of the 1,500 Top U.S. High Schools; <http://www.newsweek.com/id/201160/?s=reno,+nv&q=2009/rank/1>

\*\*\* National rankings for the Class of 2009 will not be available until June 2010

"-" Denotes Challenge Index was less than 1.0, so the school was not ranked

AP classes are not offered at AACT, TMCC or Washoe high schools

Gerlach HS has too few seniors to report

# MILLENNIUM SCHOLARSHIP

## Percentage of Graduates Qualified for the Millennium Scholarship by Year

SCHOOL	Percent of Qualified Graduates 1999-2000	Percent of Qualified Graduates 2000-2001	Percent of Qualified Graduates 2001-2002	Percent of Qualified Graduates 2002-2003	Percent of Qualified Graduates 2003-2004	Percent of Qualified Graduates 2004-2005	Percent of Qualified Graduates 2005-2006	Percent of Qualified Graduates 2006-2007	Percent of Qualified Graduates 2007-2008
AACT	not open	not open	not open	not open	not open	not open	37%	27%	21%
Damonte Ranch	not open	not open	not open	not open	not open	37%	45%	33%	46%
Galena	64%	58%	65%	69%	69%	71%	65%	62%	65%
Gerlach	13%	67%	50%	67%	67%	67%	71%	50%	17%
Hug	33%	44%	42%	40%	49%	41%	40%	30%	30%
Incline	49%	71%	59%	59%	59%	61%	58%	48%	39%
McQueen	54%	59%	65%	63%	59%	58%	56%	53%	52%
North Valleys	not open	not open	not open	51%	53%	45%	48%	40%	40%
Reed	49%	61%	59%	71%	61%	52%	58%	49%	43%
Reno	68%	67%	67%	78%	70%	63%	62%	61%	59%
Spanish Springs	not open	not open	not open	52%	54%	53%	48%	49%	45%
Sparks	44%	53%	56%	58%	47%	39%	45%	49%	41%
TMCC	66%	74%	75%	78%	74%	75%	73%	70%	63%
Washoe	16%	54%	44%	31%	24%	10%	8%	15%	11%
Washoe Adult	41%	66%	26%	56%	14%	7%	6%	40%	1%
Wooster	43%	60%	51%	63%	63%	57%	46%	56%	53%
WCSD	50%	59%	56%	63%	57%	52%	51%	48%	45%
GPA Requirement	3.00	3.00	3.00	3.00	3.00	3.10	3.10	3.25	3.25

Information for 2008-2009 not yet available

# WCSD GRADUATING COHORTS ANALYSIS

The Tracking of WCSD Graduates\* from High School to College

## Graduating Cohorts

- 2008-2009 Graduates = 3292
- 2007-2008 Graduates = 3151
- 2006-2007 Graduates = 2922
- 2005-2006 Graduates = 2887
- 2004-2005 Graduates = 2842
- 2003-2004 Graduates = 2742
- 2002-2003 Graduates = 2635
- 2001-2002 Graduates = 2560
- 2000-2001 Graduates = 2429
- 1999-2000 Graduates = 2243
- 1998-1999 Graduates = 2227
- 1997-1998 Graduates = 2072
- 1996-1997 Graduates = 2006

## College Measures

∞ **Capture Rate:** The percentage of WCSD graduates enrolling at UNR, TMCC, other in-state colleges and universities and out-of-state institutions immediately following high school graduation.

∞ **Remediation:** Student enrollment in developmental English or math courses (intermediate algebra and below).

∞ **Persistence:** The rate at which a cohort returns to college with each advancing semester.

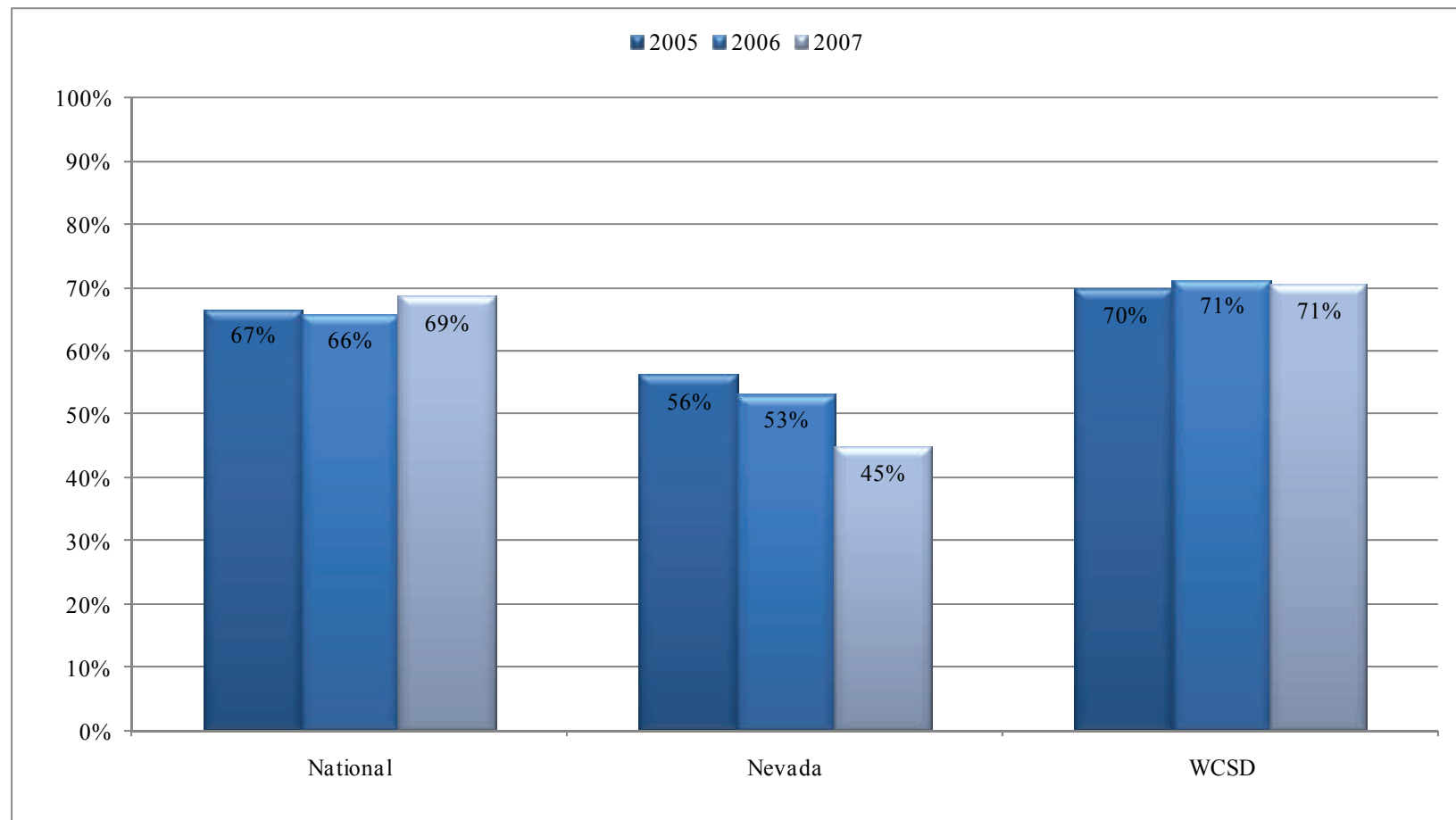
∞ **SAT and ACT Exams:** SAT and ACT scores of WCSD graduates\* attending the University of Nevada, Reno.

\* Includes standard and adjusted diplomas from District schools. Does not include Washoe Adult High School or the Charter Schools.



# WCSD COLLEGE-GOING RATE FOR 2005-2007

Percentage of High School Graduates Immediately Enrolling in Post-Secondary Education\*



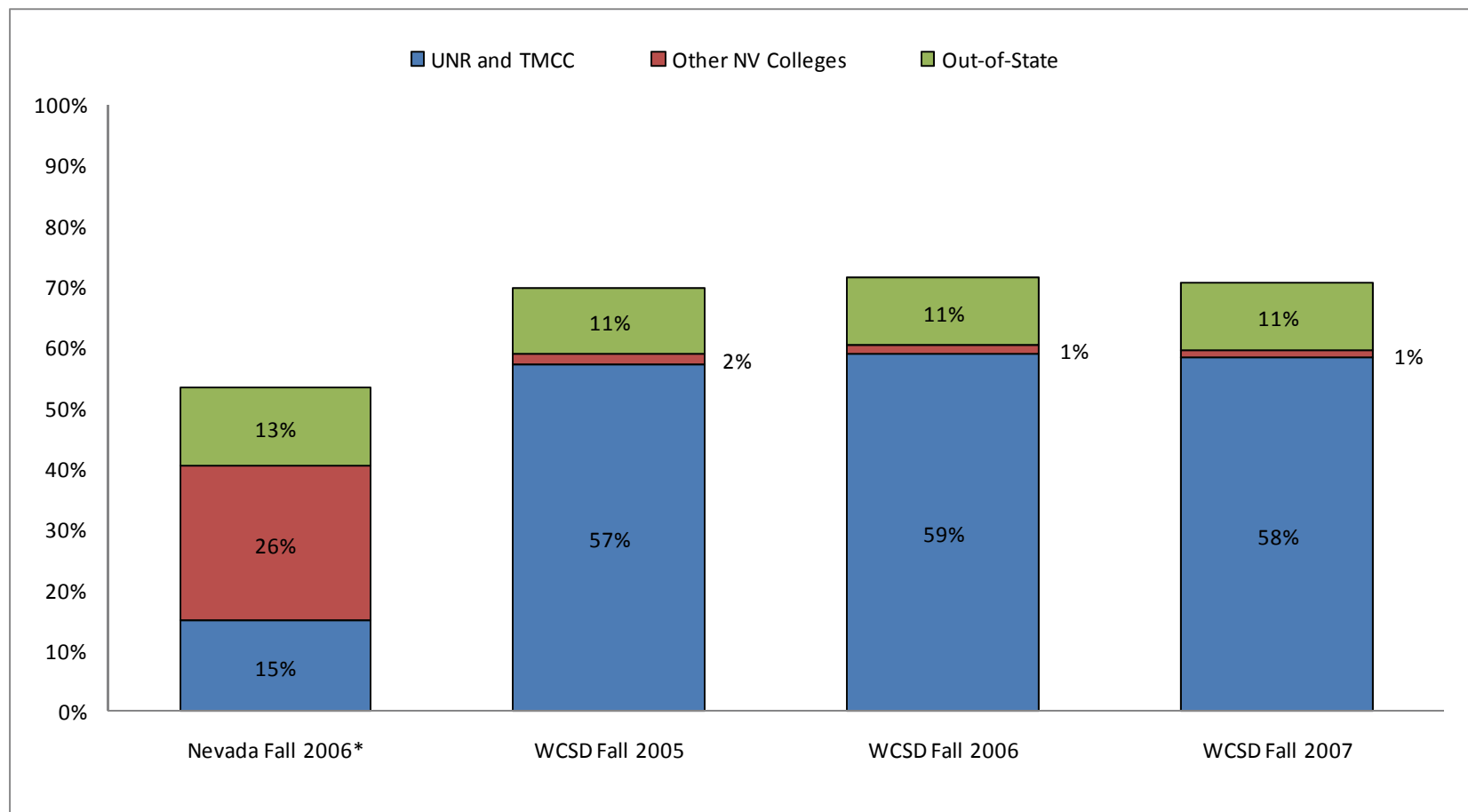
\* To permit comparison with state and national rates, only WCSD graduates with standard, advanced and honors diplomas are included in the percentages depicted in the college-going rate charts. Students with adjusted diplomas were excluded. Additionally, the Nevada and national rates include charter and private high schools, but the WCSD rate does not. The national rate shown here is based on census data, and differs from the national rate reported in the 2003-04 Data Profile. *New data sources and calculation methods were applied beginning with the 2006 edition. Therefore the college going rates reported here are not directly comparable to those reported for years prior to 2005.*

The data source used to calculate the total WCSD college-going rate is no longer available. Consequently, the total WCSD (in-state plus out-of-state) college-going rates for 2008 and 2009 cannot be calculated.

Sources: Postsecondary Education Opportunity; Nevada System of Higher Education 2008 Report on Nevada College Continuation Rates, WCSD Data Profile, National Student Clearinghouse Student Tracker Service

# CLASS OF 2007 GOING RATE

Percentage of 2007 Nevada and WCSD High School Graduates Enrolling in Local, In-State and Out-of-State Institutions\*



\* The most recent year for which data are available.

Out-of-state numbers are estimates based on previous years.

Only high school graduates with standard diplomas were included in the percentages depicted in the college-going rate charts. In all other charts in this profile, WCSD rates include adjusted diplomas. Additionally, the Nevada rates include charter and private schools; the WCSD rates do not include charter or private schools.

Sources: Nevada System of Higher Education Annual Reports on Nevada College Continuation Rates and College Remediation.

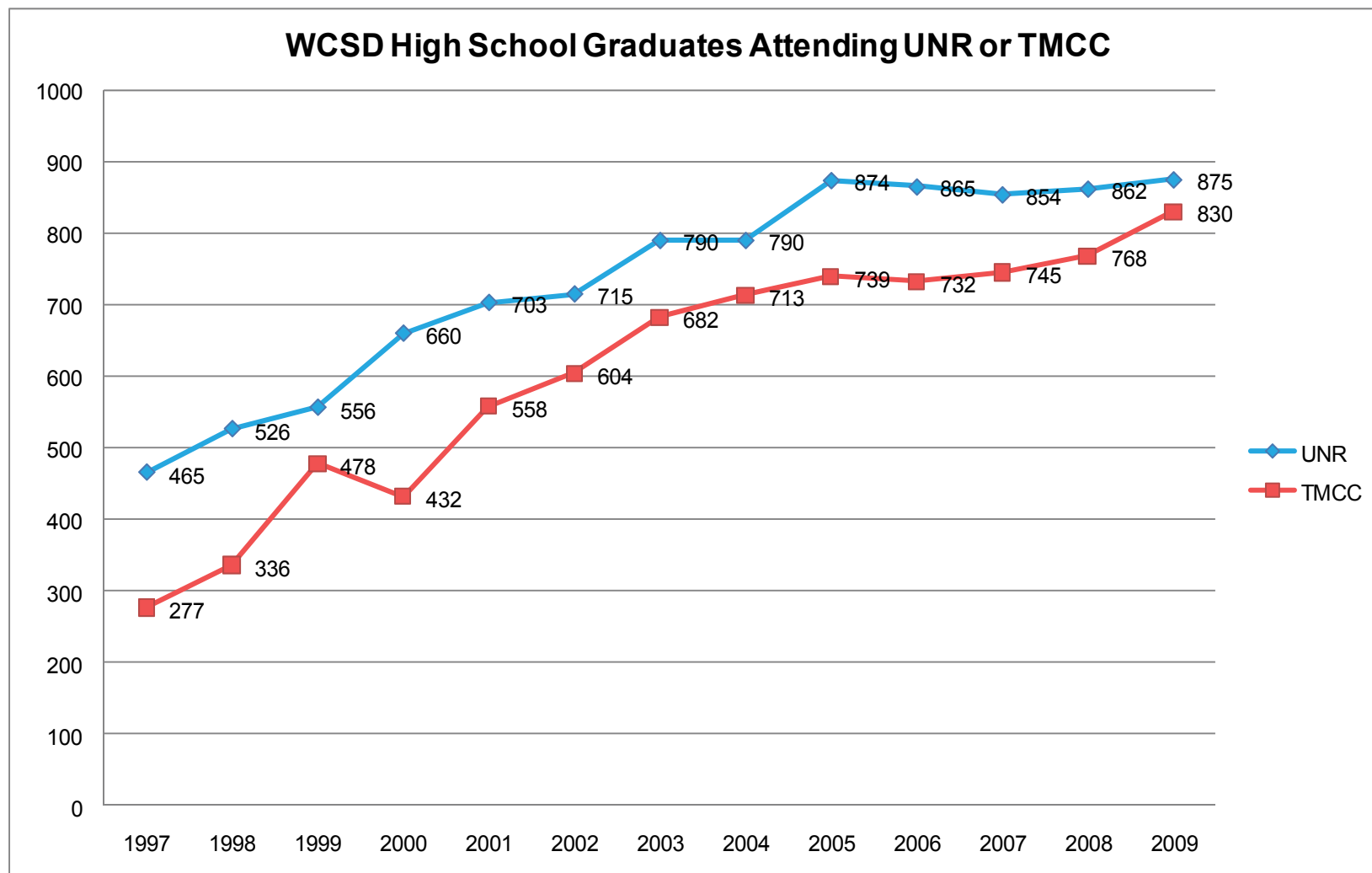
## **CAPTURE RATES BASED ON UNR & TMCC ENROLLMENT COUNTS**

The college-going rate for Washoe County School District reported in the previous two pages was calculated using student-matched data collected by the National Student Clearinghouse Student Tracker Service. The student-matched data generate a more precise college-going rate than the rates published in previous Data Profile reports. Using student-matched data, WCSD students who received an adjusted diploma or did not graduate (i.e. drop outs and students who received a certificate of attendance), but nevertheless enrolled in college, can be identified and excluded from the analysis. Additionally, students who are dual-enrolled (i.e. taking classes at both UNR and TMCC during the same term) can be identified so that they are only counted once in the college-going rate.

The TMCC and UNR capture rates reported on the following pages differ from the college-going rates reported on previous pages in that they may include WCSD students who received an adjusted diploma, students who did not graduate, and/or students dual-enrolled at UNR and TMCC.

# WCSD HIGH SCHOOL GRADUATES ATTENDING UNR OR TMCC

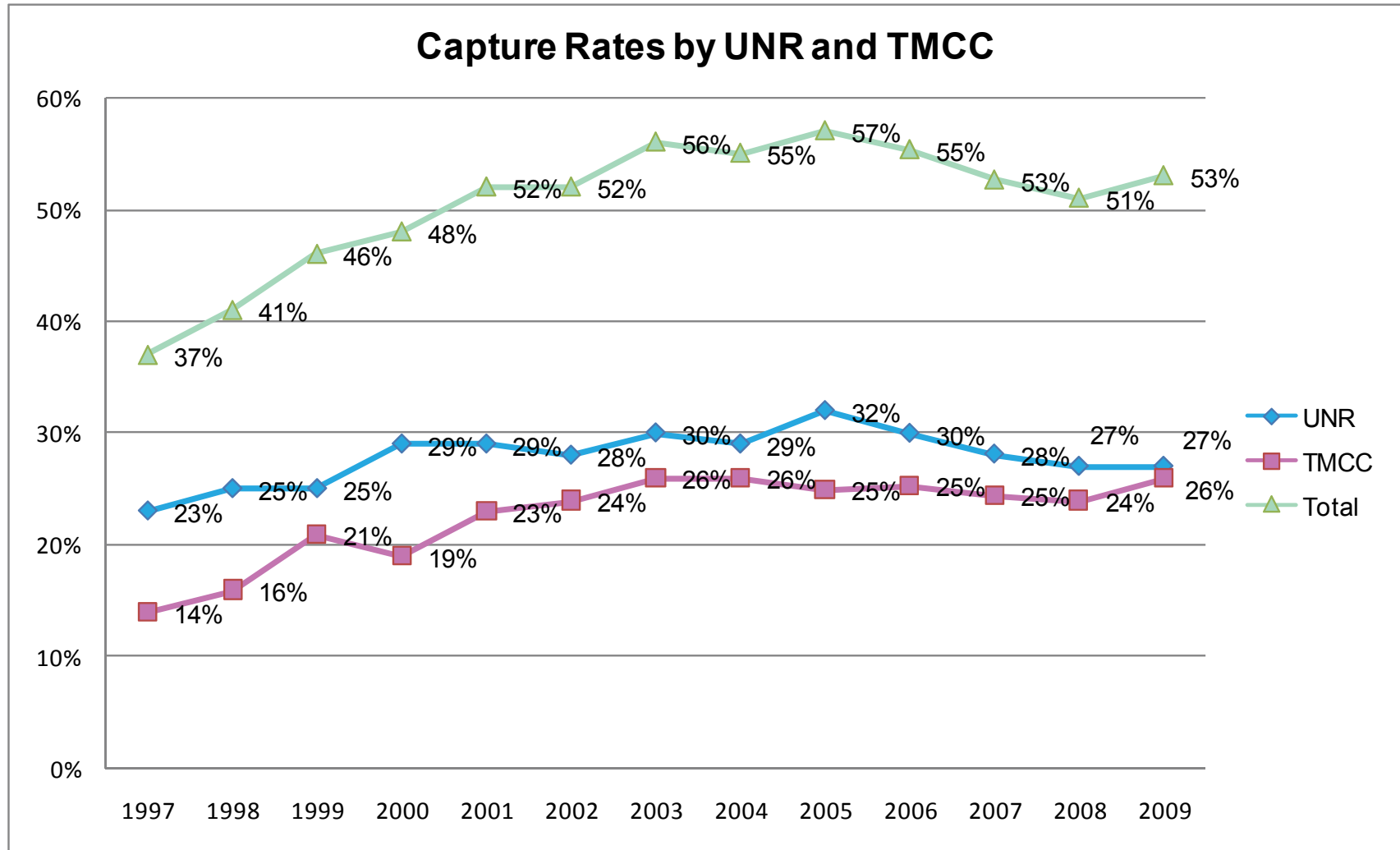
Number of WCSD Graduates Enrolling by Year



Numbers may include WCSD students who did not receive a diploma and students co-enrolled at both institutions.

# CAPTURE RATES OF HIGH SCHOOL COHORTS BY UNR & TMCC

Percentage of WCSD Graduates Enrolling in UNR and TMCC by Year



Data have been corrected from previous years.

Numbers may include WCSD students who did not receive a diploma and students co-enrolled at both institutions.

## COMBINED UNR & TMCC CAPTURE RATE BY HIGH SCHOOL

High Schools	Fall 2001	Fall 2002	Fall 2003	Fall 2004	Fall 2005	Fall 2006	Fall 2007	Fall 2008	Fall 2009	
	%	%	%	%	%	%	%	%	N	%
AACT	Not Open	Not Open	Not Open	Not Open	-	37%	58%	25%	14	30%
Damonte Ranch	Not Open	Not Open	Not Open	-	38%	53%	49%	53%	100	52%
Galena	57%	52%	61%	76%	65%	53%	55%	64%	194	65%
Gerlach	42%	0%	67%	67%	33%	43%	50%	0%	1	17%
Hug	43%	36%	42%	36%	42%	40%	43%	48%	76	57%
Incline	26%	37%	30%	31%	32%	39%	32%	37%	29	39%
McQueen	61%	60%	62%	63%	62%	65%	60%	63%	249	66%
North Valleys	Not Open	Not Open	42%	48%	55%	52%	49%	54%	151	51%
Reed	49%	51%	55%	48%	56%	63%	53%	54%	209	55%
Reno	52%	51%	58%	53%	66%	63%	51%	62%	208	62%
Spanish Springs	Not Open	Not Open	51%	48%	51%	47%	54%	59%	170	49%
Sparks	44%	47%	56%	56%	60%	45%	65%	48%	101	75%
TMCC	62%	78%	80%	92%	82%	68%	64%	79%	60	65%
Washoe	33%	77%	57%	59%	46%	46%	48%	66%	45	78%
Wooster	52%	45%	48%	46%	55%	54%	48%	62%	97	53%
<b>Total</b>	<b>52%</b>	<b>52%</b>	<b>56%</b>	<b>55%</b>	<b>57%</b>	<b>55%</b>	<b>53%</b>	<b>56%</b>	<b>1705</b>	<b>58%</b>

Numbers may include WCSD students who did not receive a diploma and students co-enrolled at both institutions, and are not comparable to the reported college-going rates.

— Denotes no graduates that year

# TMCC CAPTURE RATE BY HIGH SCHOOL

	Fall 2001	Fall 2002	Fall 2003	Fall 2004	Fall 2005	Fall 2006	Fall 2007	Fall 2008	Fall 2009	
High Schools	%	%	%	%	%	%	%	%	N	%
AACT	Not Open	Not Open	Not Open	Not Open	-	37%	55%	24%	14	27%
Damonte Ranch	Not Open	Not Open	Not Open	-	26%	21%	21%	27%	48	24%
Galena	25%	20%	26%	23%	24%	17%	20%	20%	64	21%
Gerlach	25%	0%	67%	11%	0%	29%	0%	0%	0	0%
Hug	26%	24%	29%	27%	25%	26%	25%	26%	45	28%
Incline	10%	16%	14%	12%	13%	12%	9%	13%	17	21%
McQueen	22%	18%	23%	21%	22%	23%	23%	24%	99	25%
North Valleys	Not Open	Not Open	22%	31%	29%	28%	30%	29%	92	29%
Reed	21%	24%	24%	27%	28%	27%	23%	22%	120	29%
Reno	17%	18%	17%	16%	22%	23%	14%	19%	58	16%
Spanish Springs	Not Open	Not Open	27%	27%	19%	22%	27%	22%	81	22%
Sparks	21%	23%	30%	32%	39%	25%	44%	20%	63	39%
TMCC	46%	52%	60%	46%	53%	49%	47%	61%	40	44%
Washoe	33%	77%	57%	71%	43%	46%	48%	35%	42	28%
Wooster	22%	24%	23%	24%	25%	33%	19%	28%	47	24%
<b>Total</b>	<b>23%</b>	<b>24%</b>	<b>26%</b>	<b>26%</b>	<b>25%</b>	<b>25%</b>	<b>25%</b>	<b>24%</b>	<b>816</b>	<b>26%</b>

Numbers may include WCSD students who did not receive a diploma and students co-enrolled at both institutions.

— Denotes no graduates that year

# UNR CAPTURE RATE BY HIGH SCHOOL

High Schools	Fall 2001	Fall 2002	Fall 2003	Fall 2004	Fall 2005	Fall 2006	Fall 2007	Fall 2008	Fall 2009	
	%	%	%	%	%	%	%	%	N	%
AACT	Not Open	Not Open	Not Open	Not Open	-	0%	3%	0%	0	0%
Damonte Ranch	Not Open	Not Open	Not Open	-	12%	31%	28%	22%	52	27%
Galena	33%	33%	37%	39%	41%	37%	35%	43%	130	44%
Gerlach	17%	10%	0%	33%	33%	14%	50%	0%	1	0%
Hug	18%	11%	13%	15%	17%	15%	18%	14%	31	23%
Incline	17%	21%	16%	17%	19%	28%	24%	22%	12	16%
McQueen	40%	43%	40%	41%	39%	41%	37%	37%	150	40%
North Valleys	Not Open	Not Open	20%	21%	26%	25%	19%	23%	59	20%
Reed	30%	28%	32%	29%	28%	36%	30%	29%	89	23%
Reno	38%	34%	42%	37%	44%	40%	37%	42%	150	44%
Spanish Springs	Not Open	Not Open	24%	22%	32%	25%	27%	35%	89	26%
Sparks	23%	24%	28%	18%	22%	20%	21%	29%	38	28%
TMCC	18%	26%	30%	20%	28%	19%	17%	15%	20	22%
Washoe	0%	0%	0%	0%	2%	0%	0%	3%	3	5%
Wooster	30%	21%	25%	25%	30%	21%	29%	33%	50	27%
<b>Total</b>	<b>29%</b>	<b>28%</b>	<b>30%</b>	<b>29%</b>	<b>32%</b>	<b>30%</b>	<b>28%</b>	<b>27%</b>	<b>875</b>	<b>27%</b>

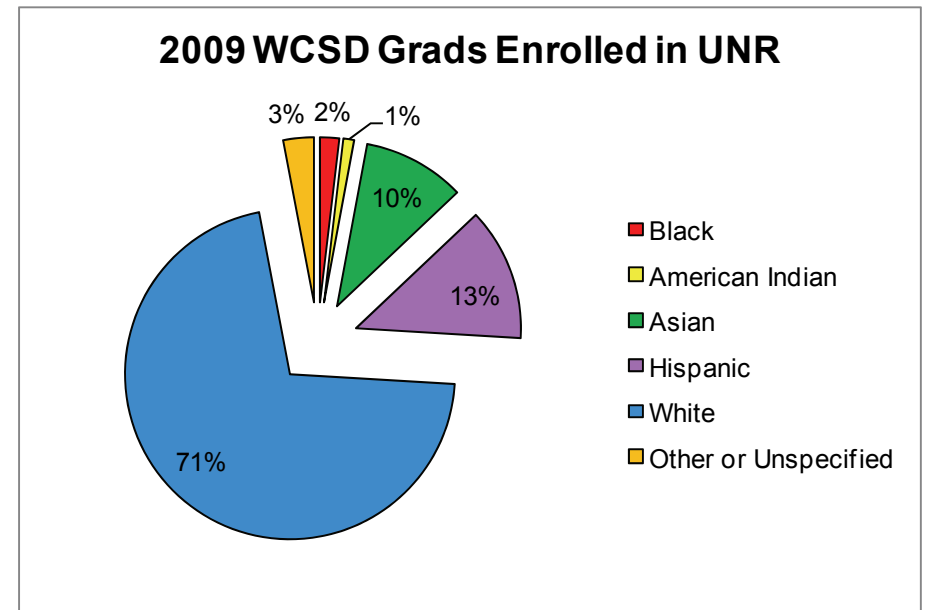
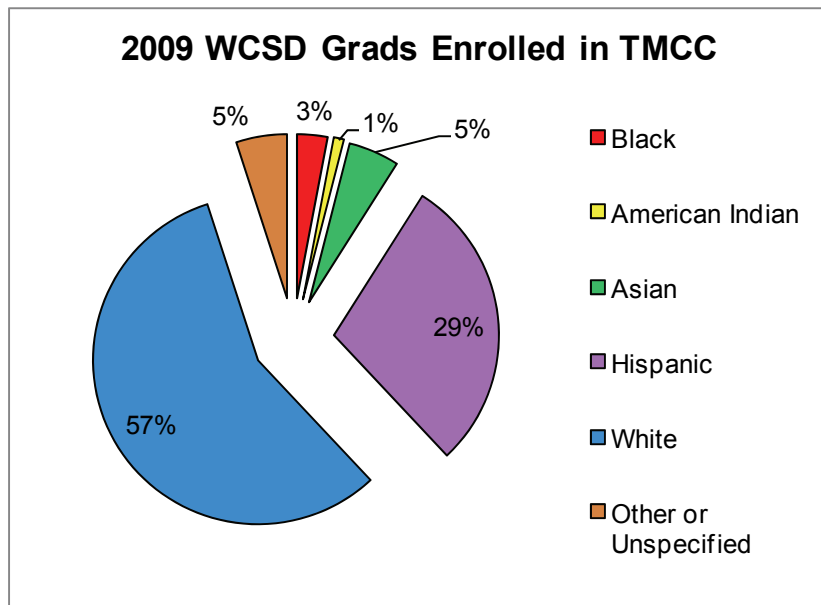
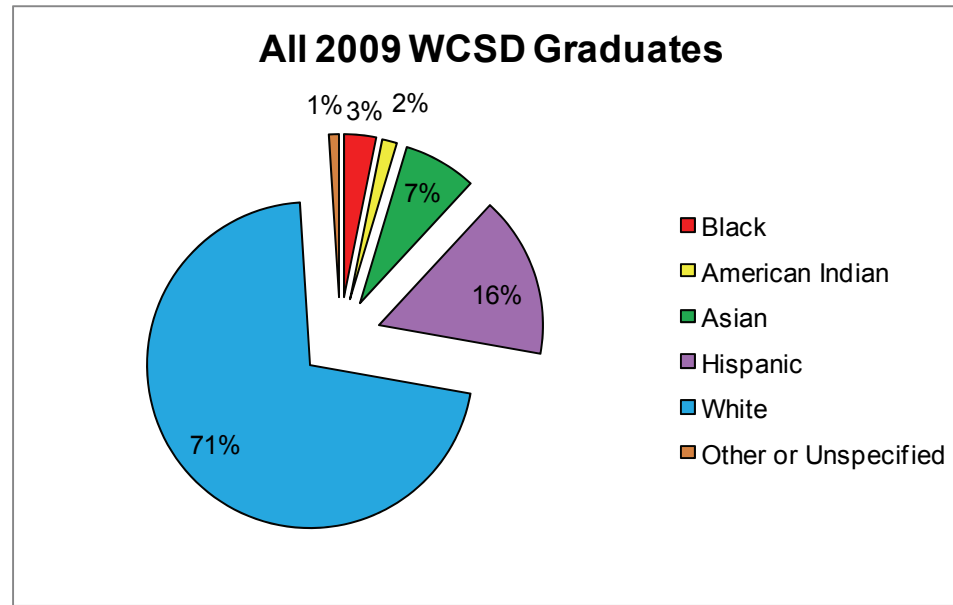
Numbers may include WCSD students who did not receive a diploma and students co-enrolled at both institutions.

‘-’ Denotes no graduates that year



# ETHNIC COMPOSITION OF WCSD GRADUATES ATTENDING UNR & TMCC

Fall 2009 Freshmen



# WCSD GRADUATES' NEED FOR REMEDIATION

## **Prior Conclusions of 4-Year Review of Remediation Data for WCSD Graduates Enrolled as Freshmen at UNR and TMCC Remediation Study Conducted Between 2002 and 2005**

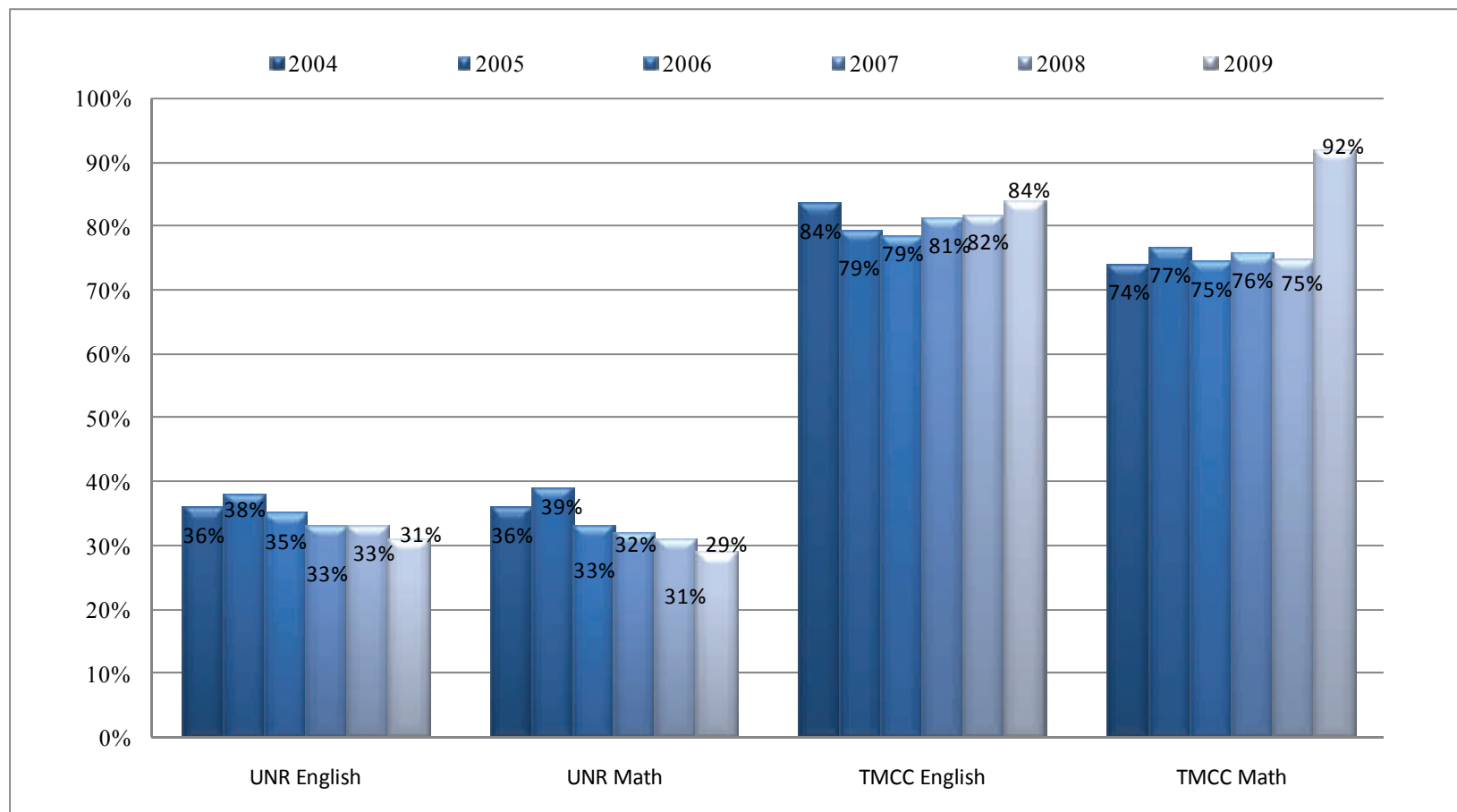
- ∞ The percentage of students enrolled in remedial English or math as freshmen at UNR and TMCC is lower than the percentage of students who need remedial English or math based on their placement scores.
- ∞ Over 80% of students enrolled in remedial English or math as freshman are there because of their placement exam scores and not because of self-selection.
- ∞ Enrollment in high school mathematics beyond the level of Algebra 3-4 dramatically reduces the likelihood that a student will need math remediation in college. Enrollment in Advanced Placement English and mathematics courses in high school also appears to reduce the likelihood that a student will need remediation in those content areas in college.
- ∞ In general, students who registered for remedial math in college are characterized by not having taken four years of high school math, not having taken math beyond Algebra 3-4, and often not even having taken and passed Algebra 3-4.
- ∞ Those students enrolled in remedial math in college who had completed Algebra 3-4 in high school were generally students who earned a C grade or lower in Algebra 3-4. The average cumulative math GPA in high school of these students was 2.43.

## **Differences Between Remedial Enrollment and Remedial Need**

- ∞ Past issues of the Data Profile reported WCSD graduates' enrollment in remedial courses at UNR and TMCC. Remedial enrollment is an important indicator on its own, but it underreports the true need for remediation. Many students who demonstrate a need for remediation based on placement scores postpone enrolling in remedial classes until sometime later in their college career, and are therefore not included in remedial enrollment counts, which are based on first-time freshman fall enrollment numbers.
- ∞ In this and future issues of the Data Profile only remediation need based on placement scores will be reported. Remedial enrollment will no longer be reported.

# NEED FOR REMEDIATION BASED ON PLACEMENT SCORES

Percentage of WUSD Graduates with ACT, SAT or Accuplacer Scores Demonstrating a Need for Remedial Math or English Placement\*



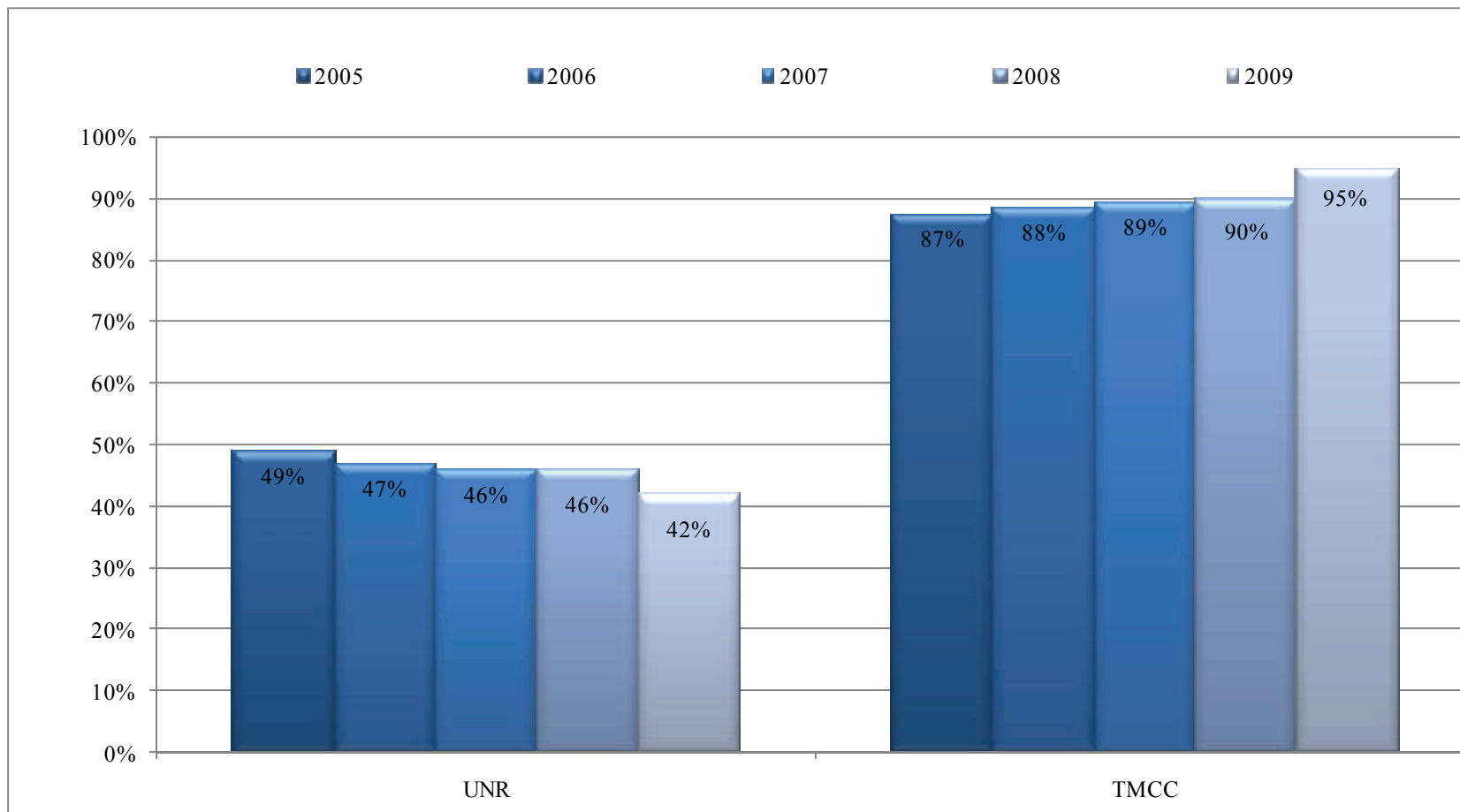
In Fall 2009, the ACCUPLACER score for math placement was changed. If 2008 ACCUPLACER criteria were used for 2009 freshmen, 76% of WUSD grads enrolling in TMCC for the first time in Fall 2009 would have placed into remedial math.

\* This chart depicts students whose scores on placement exams were below the cut-off for college level work. Not all of these students enrolled in English or math in their first semester at UNR or TMCC. Placement exam cut-off scores: UNR English: ACT verbal <21; SAT verbal < 510; UNR Math: ACT math <21; SAT math <510; TMCC : Accuplacer, ACT or SAT score below cut for college level. Approximately 5% of UNR and 15% of TMCC WUSD freshmen do not have placement exam scores.

Data have been corrected for previous years.

# NEED FOR REMEDIATION BASED ON PLACEMENT SCORES

Percentage of WUSD Graduates with ACT, SAT or Accuplacer Scores Demonstrating a Need for Remediation in Math, or English, or both\*



In Fall 2009, the ACCUPLACER score for math placement was changed. If 2008 ACCUPLACER criteria were used for 2009 freshmen, 90% of WUSD grads enrolling in TMCC for the first time in Fall 2009 would have placed into remedial English, math or both.

This chart depicts students whose scores on placement exams were below the cut-off for college level work. Not all of these students enrolled in English or math in their first semester at UNR or TMCC. Placement exam cut-off scores: UNR English: ACT verbal <21; SAT verbal <510; UNR Math: ACT math <21; SAT math <510; TMCC: Accuplacer, ACT or SAT score below cut for college level. Approximately 5% of UNR and 15% of TMCC WUSD freshmen do not have placement exam scores.

Data have been corrected for previous years.

# REMEDIATION NEED BY HIGH SCHOOL

Percentage of WCSD Graduates With Placement Exam Scores Indicating a Need for Remediation in English and/or Math

Washoe County High Schools	TMCC Remediation Need Determined by Placement Exam			
	2008		2009	
	N	%	N	%
AACT	8	100%	14	100%
Damonte Ranch	55	94%	48	100%
Galena	56	95%	60	93%
Gerlach	-	-	-	-
Hug	44	100%	44	98%
Incline	9	89%	15	88%
McQueen	84	94%	87	88%
North Valleys	76	92%	87	95%
Reed	87	85%	115	96%
Reno	60	85%	51	88%
Spanish Springs	73	90%	78	96%
Sparks	23	92%	63	100%
TMCC	38	73%	40	100%
Washoe	38	95%	41	97%
Wooster	44	89%	43	91%
<b>TOTAL</b>	<b>695</b>	<b>90%</b>	<b>786</b>	<b>95%</b>

\* Total includes schools with fewer than 5 students attending TMCC, and is therefore higher than the sum of individual schools.

‘-’ Denotes fewer than 5 students enrolled.

# REMEDIATION NEED BY HIGH SCHOOL

Percentage of WCSD Graduates With Placement Exam Scores Indicating a Need for Remediation in English and/or Math

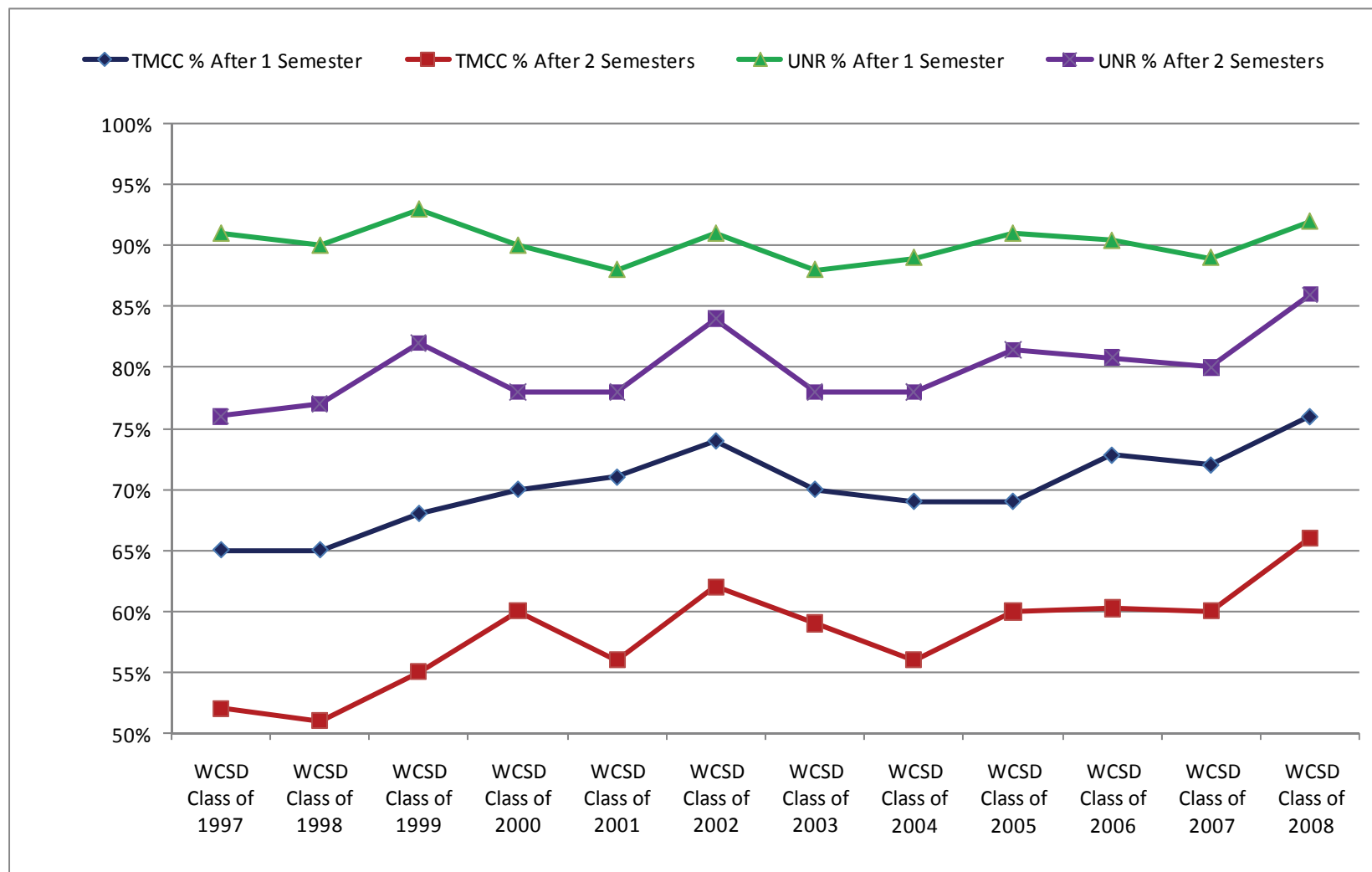
Washoe County High Schools	UNR Remediation Need Determined by Placement Exam			
	2008		2009	
	N	%	N	%
AACT	-	-	-	-
Damonte Ranch	25	60%	28	54%
Galena	46	40%	47	36%
Gerlach	-	-	-	-
Hug	13	72%	23	74%
Incline	7	50%	6	50%
McQueen	59	45%	51	34%
North Valleys	27	46%	24	41%
Reed	51	44%	42	47%
Reno	53	38%	57	38%
Spanish Springs	56	47%	42	47%
Sparks	24	67%	21	55%
TMCC	6	50%	10	50%
Washoe	-	-	-	-
Wooster	27	49%	15	30%
TOTAL	395	46%	367	42%

\* Total includes schools with fewer than 5 students attending UNR, and is therefore higher than the sum of individual schools.

‘-’ Denotes fewer than 5 students enrolled.

# TMCC AND UNR PERSISTENCE RATES

## WCSD Graduating Cohorts



Nationally, 73.5% will return after 2 semesters at Universities and 55.8% at Community Colleges (2003, ACT Institutional Data Questionnaire)

# PERSISTENCE AT TMCC BY HIGH SCHOOL

Percentage Returning After One Semester

	Fall 2001	Fall 2002	Fall 2003	Fall 2004	Fall 2005	Fall 2006	Fall 2007	Fall 2008	
High Schools	%	%	%	%	%	%	%	N	%
AACT	Not Open	Not Open	Not Open	Not Open	-	73%	61%	6	75%
Damonte Ranch	Not Open	Not Open	Not Open	-	68%	65%	63%	41	71%
Galena	80%	77%	71%	77%	77%	71%	66%	45	76%
Gerlach	-	-	-	-	-	-	-	0	0%
Hug	68%	74%	65%	60%	59%	51%	71%	33	75%
Incline	78%	62%	55%	50%	60%	67%	78%	8	80%
McQueen	59%	73%	74%	61%	68%	80%	77%	71	80%
North Valleys	Not Open	Not Open	67%	70%	71%	68%	72%	67	82%
Reed	75%	77%	69%	75%	76%	77%	74%	82	80%
Reno	72%	80%	73%	65%	68%	74%	74%	49	70%
Spanish Springs	Not Open	Not Open	69%	100%	69%	76%	80%	57	70%
Sparks	82%	73%	71%	45%	65%	71%	67%	19	76%
TMCC	75%	75%	73%	79%	71%	77%	76%	47	92%
Washoe	48%	57%	65%	61%	42%	72%	47%	24	60%
Wooster	65%	73%	74%	72%	71%	73%	82%	37	76%
<b>Total*</b>	<b>71%</b>	<b>74%</b>	<b>70%</b>	<b>69%</b>	<b>69%</b>	<b>73%</b>	<b>72%</b>	<b>586</b>	<b>76%</b>

\* Total numbers include schools with fewer than five students attending TMCC, and are therefore higher than the sum of individual schools.

'-' Denotes fewer than 5 students attended TMCC



# PERSISTENCE AT UNR BY HIGH SCHOOL

Percentage Returning After One Semester

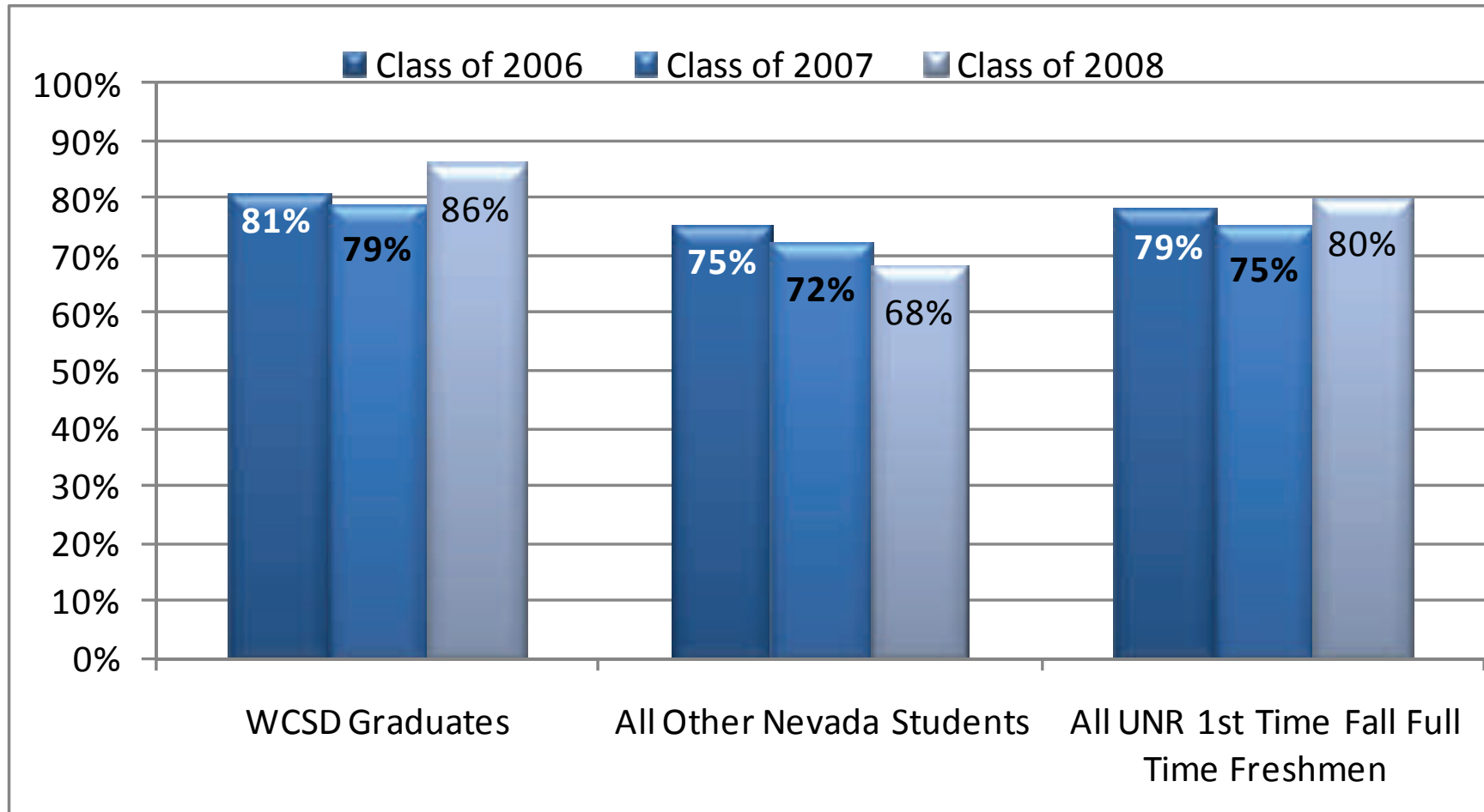
	Fall 2001	Fall 2002	Fall 2003	Fall 2004	Fall 2005	Fall 2006	Fall 2007	Fall 2008	
High Schools	%	%	%	%	%	%	%	N	%
AACT	Not Open	Not Open	Not Open	Not Open	-	-	-	-	-
Damonte Ranch	Not Open	Not Open	Not Open	-	44%	79%	83%	41	98%
Galena	92%	90%	89%	91%	89%	95%	95%	104	90%
Gerlach	-	-	-	-	-	-	-	1	100%
Hug	84%	88%	84%	87%	90%	80%	80%	17	94%
Incline	93%	71%	77%	100%	100%	86%	96%	13	93%
McQueen	95%	95%	92%	90%	95%	92%	93%	126	97%
North Valleys	Not Open	Not Open	82%	87%	86%	87%	80%	51	86%
Reed	81%	90%	87%	81%	91%	90%	86%	106	91%
Reno	88%	96%	90%	95%	90%	95%	93%	129	91%
Spanish Springs	Not Open	Not Open	86%	84%	89%	85%	86%	111	93%
Sparks	85%	92%	90%	89%	83%	94%	90%	35	97%
TMCC	89%	81%	78%	89%	67%	88%	86%	12	100%
Washoe	-	-	-	-	-	-	-	1	50%
Wooster	87%	86%	93%	85%	93%	89%	88%	51	93%
<b>Total*</b>	<b>88%</b>	<b>91%</b>	<b>88%</b>	<b>89%</b>	<b>91%</b>	<b>90%</b>	<b>89%</b>	<b>798</b>	<b>92%</b>

\* Total numbers include schools with fewer than five students attending UNR, and are therefore higher than the sum of individual schools.

'-' Denotes fewer than 5 students attended UNR

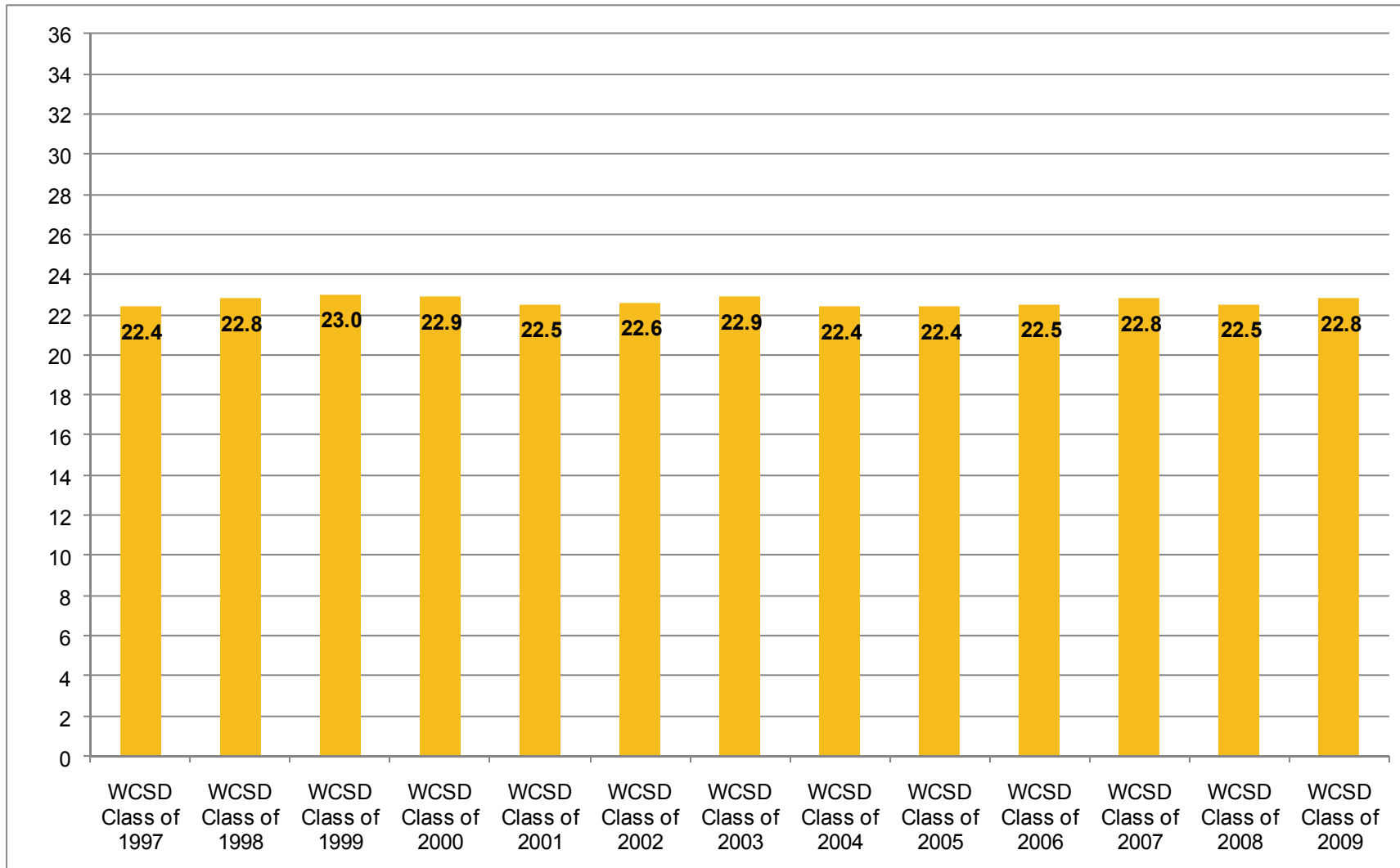
# PERSISTENCE AT UNR

Percentage Returning After Two Semesters



# ACT SCORES - UNR

ACT Composite Scores of WCSD Graduating Cohorts Attending UNR



The maximum composite ACT score is 36.

# AVERAGE ACT SCORES BY HIGH SCHOOL

WCSD Graduating Cohorts Attending UNR

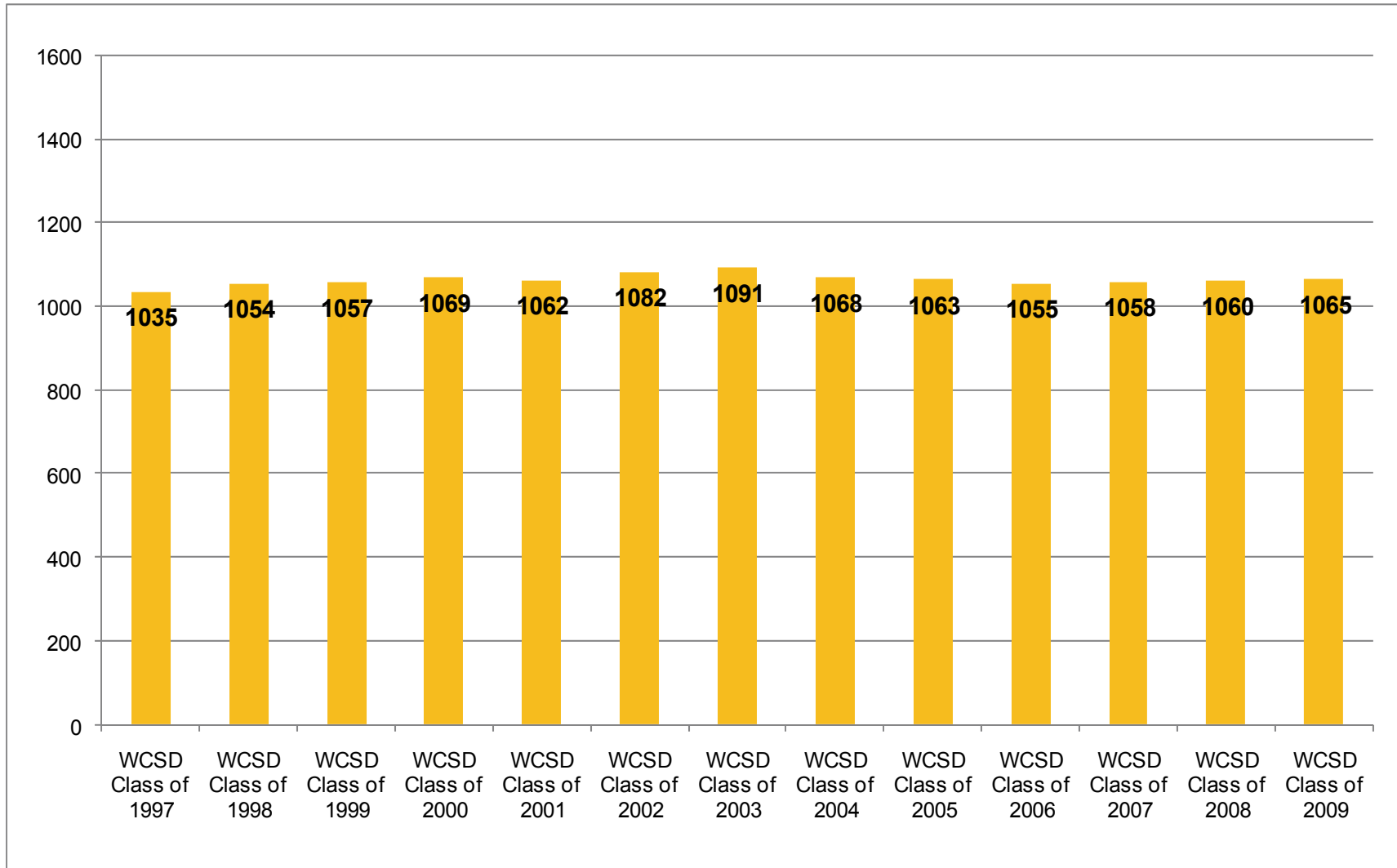
High Schools	WCSD Class of 1999	WCSD Class of 2000	WCSD Class of 2001	WCSD Class of 2002	WCSD Class of 2003	WCSD Class of 2004	WCSD Class of 2005	WCSD Class of 2006	WCSD Class of 2007	WCSD Class of 2008	WCSD Class of 2009
	Score	Score	Score	Score	Score	Score	Score	Score	Score	Score	Score
AACT	Not Open	Not Open	Not Open	Not Open	Not Open	Not Open	Not Open	-	-	-	-
Damonte Ranch	Not Open	Not Open	Not Open	Not Open	Not Open	-	22.0	20.8	24.3	22.3	22.5
Galena	23.0	23.8	23.5	22.9	22.7	22.8	22.8	22.8	23.5	22.5	23.3
Gerlach	-	-	-	-	-	-	20.0	-	-		23.0
Hug	22.3	21.7	20.3	22.0	20.1	21.7	20.0	19.8	18.6	19.6	18.6
Incline	21.9	22.5	19.5	20.8	22.0	25.0	23.7	23.1	21.2	22.2	20.2
McQueen	24.5	23.5	22.9	23.0	23.5	23.1	22.7	23.1	23.4	23.2	23.9
North Valleys	Not Open	Not Open	Not Open	Not Open	21.8	22.3	22.1	23.3	23.1	23.1	23.8
Reed	23.3	23.2	22.0	22.6	23.2	21.6	22.1	22.5	23.2	22.3	22.7
Reno	21.9	22.1	23.1	23.4	23.7	22.8	22.7	22.2	22.9	23.4	23.5
Spanish Springs	Not Open	Not Open	Not Open	Not Open	21.5	20.7	22.6	21.6	21.4	22.1	21.8
Sparks	22.3	21.6	22.0	21.6	21.6	21.5	21.5	21.8	21.6	20.3	21.5
TMCC	23.8	23.2	23.9	22.5	23.1	23.2	23.8	23.8	25.4	23.7	21.9
Washoe	-	-	-	-	-	-	21.0	-	-	22.0	26.0
Wooster	21.4	22.7	23.4	22.4	23.0	23.0	23.4	21.5	22.6	24.2	20.8
<b>Avg Score*</b>	<b>23.0</b>	<b>22.9</b>	<b>22.5</b>	<b>22.6</b>	<b>22.9</b>	<b>22.4</b>	<b>22.4</b>	<b>22.5</b>	<b>22.8**</b>	<b>22.5</b>	<b>22.8</b>

\* Weighted mean

‘-’ Denotes fewer than 5 students enrolled.

# SAT SCORES - UNR

Combined Verbal and Math SAT Scores of WCSD Graduating Cohorts Attending UNR



The maximum combined SAT score 1600.

# AVERAGE SAT SCORES BY HIGH SCHOOL

WCSD Graduating Cohorts Attending UNR

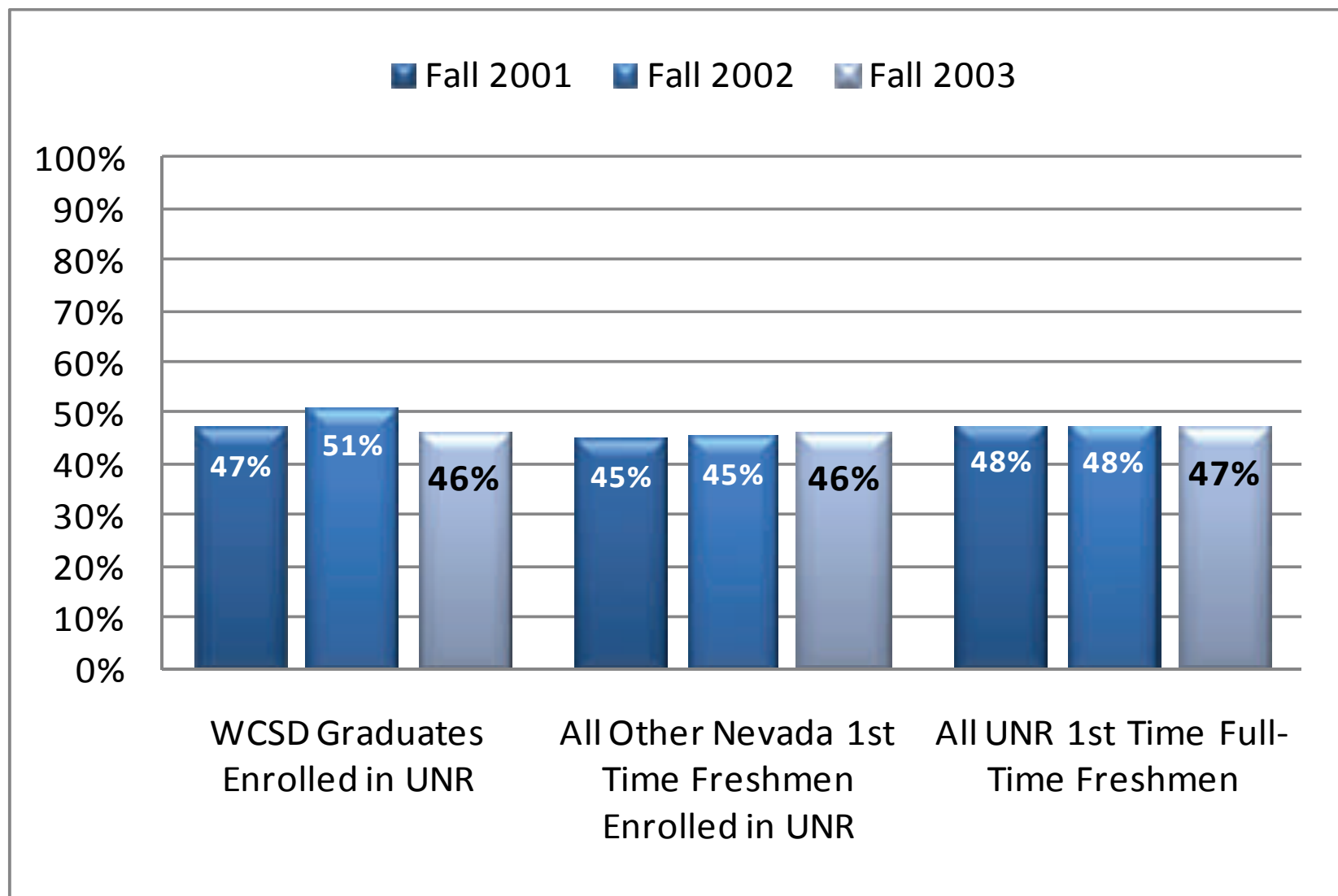
	WCSD Class of 1999	WCSD Class of 2000	WCSD Class of 2001	WCSD Class of 2002	WCSD Class of 2003	WCSD Class of 2004	WCSD Class of 2005	WCSD Class of 2006	WCSD Class of 2007	WCSD Class of 2008	WCSD Class of 2009
High Schools	Score	Score	Score	Score	Score	Score	Score	Score	Score	Score	Score
AACT	Not Open	Not Open	Not Open	Not Open	Not Open	Not Open	Not Open	-	-	-	-
Damonte Ranch	Not Open	Not Open	Not Open	Not Open	Not Open	-	964	1013	1060	1038	1025
Galena	1065	1099	1061	1062	1043	1072	1066	1088	1082	1081	1070
Gerlach	-	-	-	-	-	-	900	-	-	1210	1170
Hug	1095	1025	1053	992	1077	1077	978	896	888	957	941
Incline	1038	1008	1017	999	1034	1004	1051	1126	998	1045	1019
McQueen	1102	115	1078	1113	1158	1122	1069	1080	1076	1071	1091
North Valleys	Not Open	Not Open	Not Open	Not Open	1035	1038	1061	1039	1037	1025	1024
Reed	1038	1058	1030	1058	1103	1055	1051	1065	1056	1067	1029
Reno	1039	1053	1076	1095	1112	1071	1068	1053	1089	1077	1096
Spanish Springs	Not Open	Not Open	Not Open	Not Open	1024	1023	1070	1038	1031	1036	1054
Sparks	115	1030	1068	1127	1019	1041	1030	892	943	909	1032
TMCC	-	1061	1133	1155	1140	1040	1132	1033	1132	1170	1037
Washoe	-	-	-	-	-	-	-	-	-	-	1127
Wooster	1018	1039	1064	1098	1079	1064	1094	1047	1066	1095	1115
<b>Avg Score*</b>	<b>1057</b>	<b>1069</b>	<b>1062</b>	<b>1082</b>	<b>1091</b>	<b>1068</b>	<b>1063</b>	<b>1055</b>	<b>1058**</b>	<b>1060</b>	<b>1065</b>

\* Weighted mean

'-' Denotes fewer than 5 students enrolled.

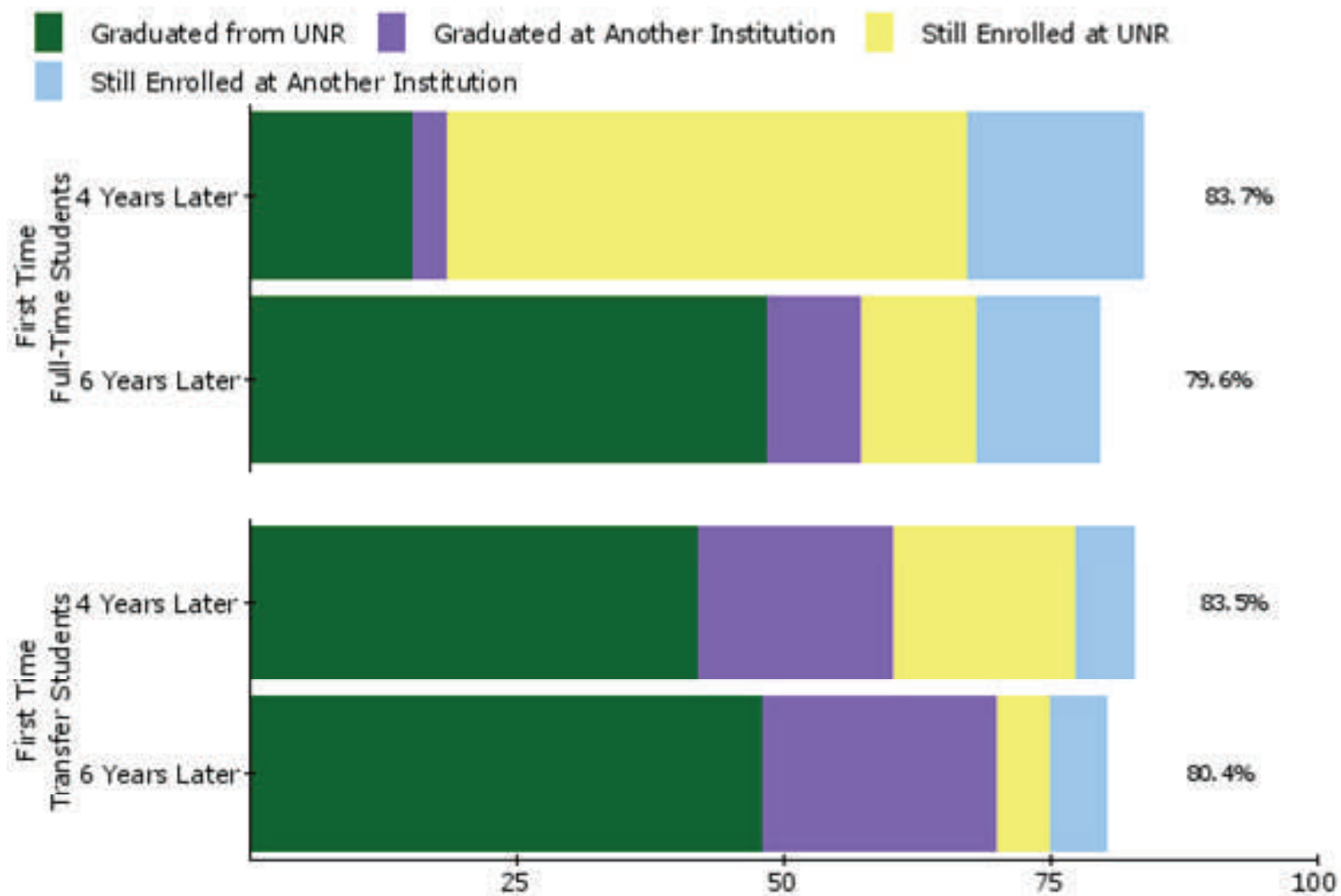
# COLLEGE SUCCESS OF WCSD GRADUATES AT UNR

Percentage of Students Awarded College Degrees Within Six Years of Initial College Enrollment



# COLLEGE SUCCESS AT UNR

## UNR Undergraduate Success and Progress Rate - All Students

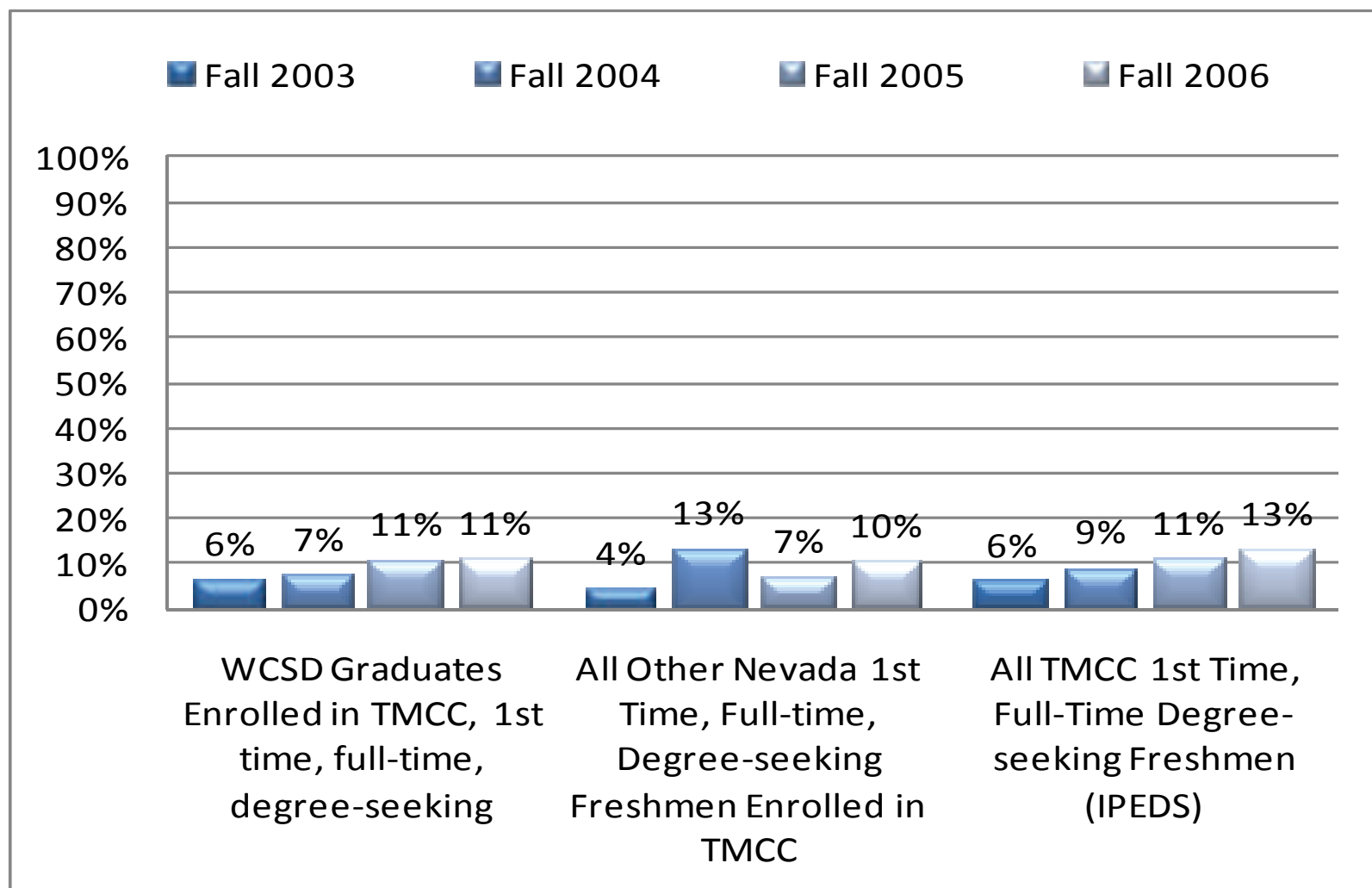


Counts for the Fall 2002 entering class shown in the graph above. 2,128 First-Time, Full-Time Students; 698 Full-Time Transfer Students



# COLLEGE SUCCESS OF WCSD GRADUATES AT TMCC

## New Full-Time Freshmen 3-year Graduation Rate



Graduation cohorts consist of students who are first-time, full-time, and degree-seeking. The graduation rate reported here is the rate of earning a degree or certificate for first-time, full-time degree-seeking students within 150% of normal time (3 years for degrees, 2 years for certificates from the first fall semester attended).

# COLLEGE SUCCESS OF WCSD GRADUATES

WCSD Graduates who graduated from the University of Nevada, Reno

As one of the state's two major universities, and as Nevada's land-grant institution, a mission of the University of Nevada, Reno (UNR) is to serve all Nevadans. While the research and service that emanate from the University contribute much to fulfilling that mission, the most important benefits to the state come from the students who are prepared by UNR.

Over half of UNR graduates (53%)\* from 2000 to 2007 also are graduates of Washoe County School district (WCSD).

The contributions these WCSD/UNR graduates provide to both public and private sectors occur, first and foremost, because the vast majority of them remain in Nevada; specifically, northern Nevada.\*\*

Of WCSD/UNR graduates:

- ∞ More than 8 of 10 reported being employed one year following commencement (an additional 12% were enrolled in another educational program and most of those were employed as graduate teaching/research assistants in that program);
  - ∞ 83% reported working in Nevada, particularly northern Nevada;
  - ∞ 97% of those graduates working in Nevada were employed in Washoe and other northern Nevada counties.

\*Percentages for all reported WCSD and UNR data are rounded to the nearest whole percent.

\*\*The sources of these data and the data that follow are UNR's alumni survey (56% response rate) and employer survey (40% rate). The complete results of both the alumni and the employer survey are available at <http://www.unr.edu/assess>.

# COLLEGE SUCCESS OF WCSD GRADUATES AT UNR

WCSD Graduates who graduated from the University of Nevada, Reno

Although WCSD/UNR graduates reported employment in a broad variety of career areas throughout Nevada, the top three fields were:

- ∞ Education—30%
- ∞ Healthcare—14%
- ∞ Business—10%

Wherever their vocational interests lead them, the quality of the preparatory education and of the higher education they received at UNR continue to pay dividends to the state as well as to the alumni. An indication of their success, and of their educational preparation, is the feedback UNR has received from their employers; specifically, their immediate supervisors.

- ∞ 92% stated that, when compared to recent graduates from other institutions, WCSD/UNR graduates were better or equally prepared;
- ∞ 98% stated that they were satisfied with WCSD/UNR graduated overall.

Because a highly educated citizenry and workforce are vital to our growth, prosperity and quality of life, the combined value of WCSD and UNR as a state resource is immense.

\*Percentages for all reported WCSD and UNR data are rounded to the nearest whole percent.

\*\*The sources of these data and the data that follow are UNR's alumni survey (56% response rate) and employer survey (40% rate). The complete results of both the alumni and the employer survey are available at <http://www.unr.edu/assess>.

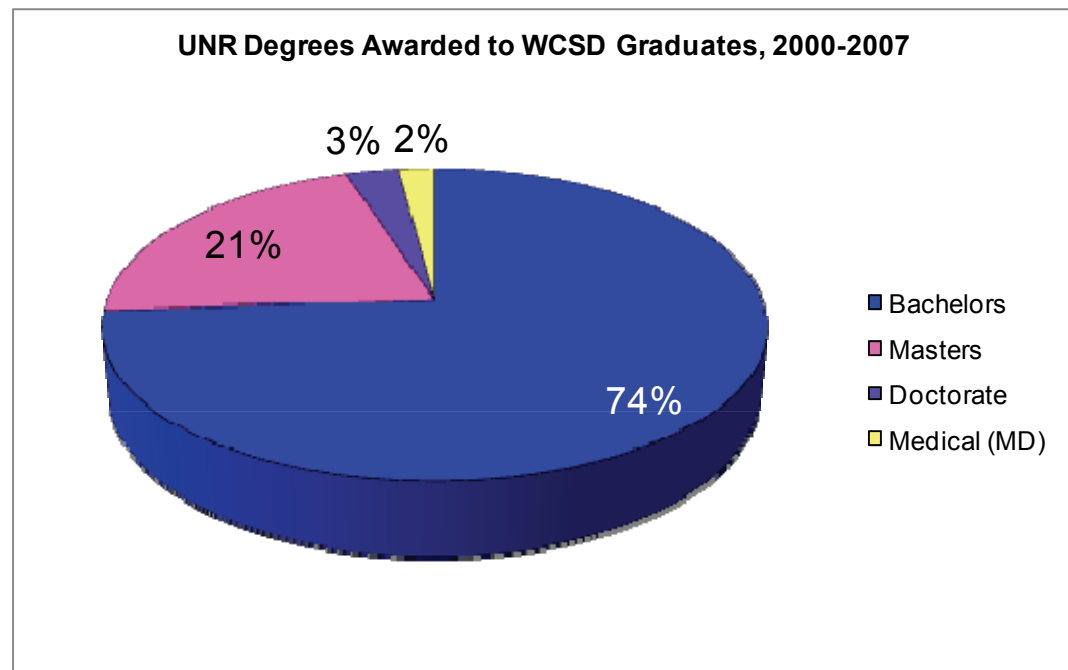
# COLLEGE SUCCESS OF WCSD GRADUATES AT UNR

## Alumni and Employer Surveys

One year following graduation, UNR attempts to survey all graduates. The alumni survey data currently available include graduates from August 2000 through December 2007. During that time span, 17,505 students graduated from UNR; of those, 9,099 degrees (52%) were awarded to students who had previously graduated from WCSD high schools.\* The selected alumni and employer survey results that follow pertain to these graduates.

∞ Of those 9,099 WCSD/UNR alumni

- ∞ 6,697 earned a bachelors
- ∞ 1,926 earned a masters
- ∞ 319 earned a doctorate
- ∞ 157 earned a medical degree



\*In some instances, individual students may have been awarded more than one UNR degree.

# COLLEGE SUCCESS OF WCSD GRADUATES AT UNR

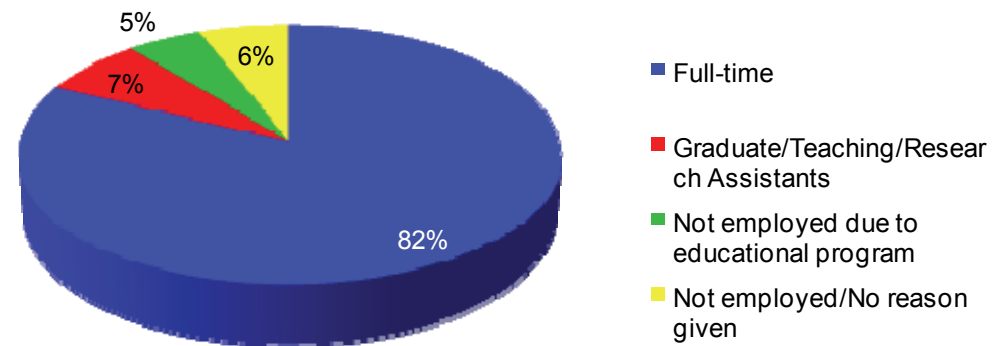
## Selected UNR Alumni Survey Results, 2000-2007

UNR graduated 9,099 WCSD alumni from 2000 through 2007. Of those, 53% of the bachelor's degree graduates and 53% of the master's and doctorate degree graduates, a combined total of 4,707, completed the alumni survey. The following data are aggregate responses to several survey items.

### Are WCSD/UNR graduates employed?

- ∞ 82% (3,840) were employed
  - ∞ Full time = 3,140, part time = 508, self-employed = 186, military = 26
- ∞ 7% were graduate/teaching/research assistants
- ∞ 5% reported not employed because they were enrolled in an educational program; and
- ∞ 6% reported not employed for other reasons

**WCSD/UNR Employment Status**

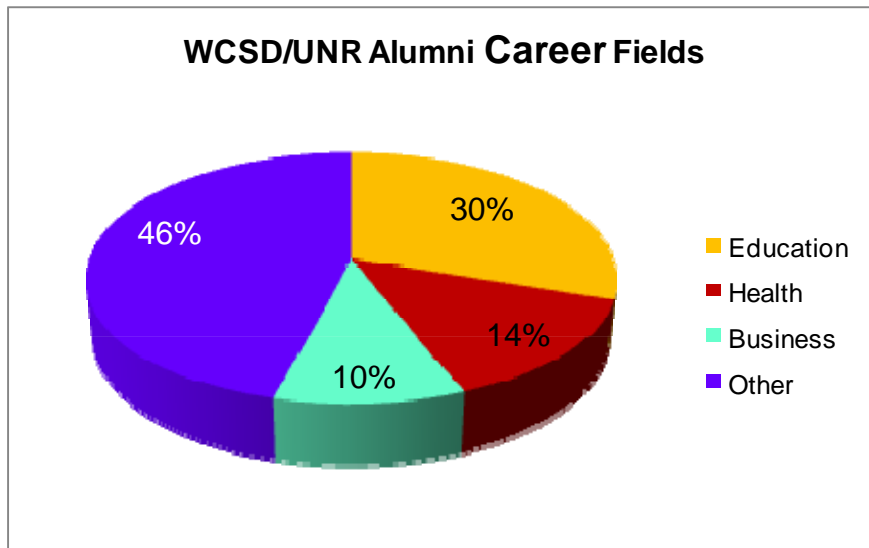
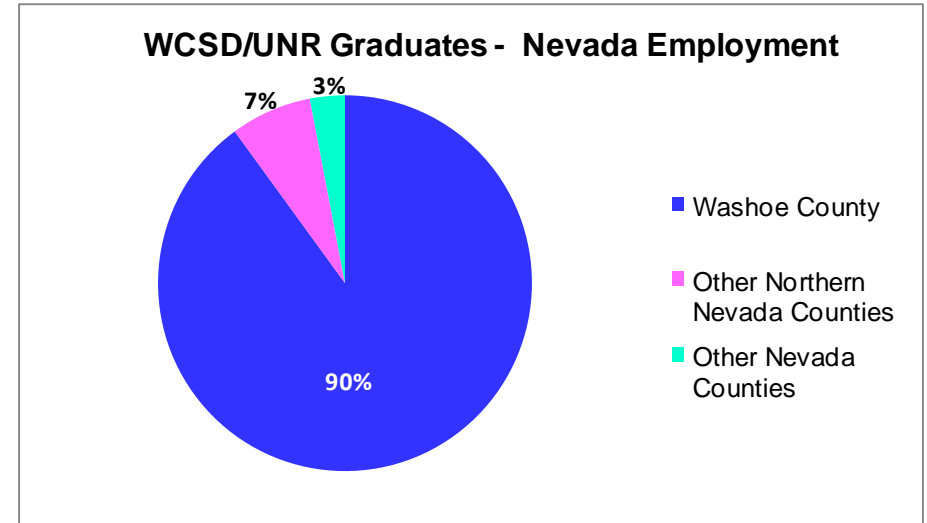


# COLLEGE SUCCESS OF WCSD GRADUATES AT UNR

Selected UNR Alumni Survey Results, 2000-2007

## Where are employed WCSD/UNR alumni working? (n=3,840)

- ∞ 83% (3,200) are employed in Nevada
  - ∞ 90% in Washoe county
  - ∞ 7% in other Northern Nevada counties
  - ∞ 3% in other Nevada counties
- ∞ 17% of all alumni are employed outside of Nevada



## What are WCSD/UNR Alumni Career Fields? (n=3,860)

- ∞ 30% are in Education
- ∞ 14% are in Health careers
- ∞ 10% are in Business careers
- ∞ 46% are classified as Other

# COLLEGE SUCCESS OF WCSD GRADUATES AT UNR

## Selected UNR Alumni Survey Results, 2000-2007

Near the conclusion of the Alumni Survey, employed respondents are advised that UNR would like to survey their immediate supervisors to rate the quality of the preparation provided by UNR in general education and other categories. Approximately 41% of employed alumni give active permission by providing the name and phone number of their immediate supervisor, 80% of whom complete interviews. The instrument and these data are published on the UNR Office of University Assessment Website—<http://www.unr.edu/assess>.

- ∞ The majority (81% of 2,088) of all supervisors interviewed were in Nevada counties: Washoe = 1,296; Carson = 100; Clark = 92; Lyon = 47; Douglas = 41; and Churchill = 26.
- ∞ 47% of 3,840 employed WCSD/UNR alumni gave permission to contact their immediate supervisors to request a survey interview. Ultimately, 1,194 employer interviews were completed—836 regarding bachelor's degree graduates and 358 master's and doctoral degree earners.
- ∞ Survey items asked supervisor to rate the preparedness of alumni they supervise on a range of skills, e.g. how well UNR prepared the employee(s) in the use of quantitative methods?

# COLLEGE SUCCESS OF WCSD GRADUATES AT UNR

Employer Survey Items Q 2a-2j: How prepared or unprepared was this graduate to:	Response Options	WCSD/UNR Alumni Employers (n = 1, 194)
		Percent
2a. Carry out required writing tasks	Very/Somewhat Prepared	95%
2b. Express themselves orally	Very/Somewhat Prepared	96%
2c. Use quantitative methods	Very/Somewhat Prepared	95%
2d. Develop solutions to work-related problems	Very/Somewhat Prepared	93%
2e. Think critically	Very/Somewhat Prepared	95%
2f. Work cooperatively	Very/Somewhat Prepared	98%
2g. Use computers and other technology	Very/Somewhat Prepared	95%
2h. Exhibit an interest in continued learning	Very/Somewhat Prepared	96%
2i. At ease working culturally diverse environments	Very/Somewhat Prepared	96%
2j. Consider ethical implication of behavior	Very/Somewhat Prepared	96%
Q3. How satisfied are you with this graduate	Very/Somewhat Prepared	98%
Q5. Of the employees you supervise, how would you rate UNR graduate(s) compared to recent graduates from other institutions	Better Than Equally Prepared	16%
	Equally Prepared	76%
	Less Prepared	7%
Q6. When considering potential employees, do you consider a UNR degree to be:	Positive Factor	63%
	Neutral	36%
	Negative Factor	1%



*The End*